

giving@webster

2022 - 2023

Scholarship Guide

PROGRESSIVE

GLOBAL

INNOVATIVE

DEFINING

INSPIRING

COMMITTED

Webster
UNIVERSITY



“I will change the world with my Webster degree by letting it change me. Acquiring knowledge should beget changes in character, fostering traits/skills like open mindedness, compassion, and critical thinking. The world can only be changed by those who are first willing to change themselves for the sake of what is good, and change is precipitated by education.”

Trinity Locke, BA 2024

Table of Contents

| | |
|--|----|
| Table of Contents | 3 |
| Endowed Scholarships | 5 |
| University-wide Scholarships | 5 |
| College of Science and Health or George Herbert Walker School of Business & Technology | 16 |
| College of Humanities and Social Sciences or Leigh Gerdine College of Fine Arts | 16 |
| College of Humanities and Social Sciences, College of Science and Health, or School of Education | 16 |
| College of Humanities and Social Sciences..... | 17 |
| College of Science and Health | 21 |
| College of Humanities and Social Sciences or College of Science and Health..... | 23 |
| George Herbert Walker School of Business & Technology..... | 27 |
| George Herbert Walker School of Business & Technology or Leigh Gerdine College of Fine Arts..... | 31 |
| Leigh Gerdine College of Fine Arts..... | 31 |
| School of Communications | 44 |
| School of Education..... | 46 |
| Study Abroad | 49 |
| Webster Society Annual Scholarships | 52 |
| University-wide Scholarships | 52 |
| College of Humanities and Social Sciences..... | 52 |
| College of Science and Health | 52 |
| George Herbert Walker School of Business & Technology..... | 52 |
| Leigh Gerdine College of Fine Arts..... | 53 |
| School of Communications | 54 |
| School of Education..... | 54 |
| Annual Scholarships | 55 |
| Future Endowed Scholarships | 56 |
| Institutional Scholarships | 59 |
| Freshman Scholarships | 59 |
| Transfer Scholarships | 60 |
| International Student Scholarships | 62 |
| Questions? | 63 |

Scholarship Guide Updated November 7, 2022

A Program for Every Student

We are excited to provide you with this guide filled with information about the many donor-sponsored and institutional scholarship opportunities that are available to Webster University students.

Webster's mission of meeting unmet needs has not changed since its founding in 1915. As we honor our past, we remain focused on our future. This focus includes growing the number of scholarships available to students so even more students may gain a quality education and change the world. These scholarships are essential to providing access and success for students.

The Gift of Education

We are proud that Webster's diverse community and innovative educational programs uphold the pioneering values and spirit of our founders, the Sisters of Loretto. This means providing access to students whose talents and dedication are greater than their economic resources. Typically, 96 percent of Webster's undergraduate students receive financial aid in the form of scholarship assistance and loans.

In the following pages of this guide are scholarship opportunities that support a variety of programs at Webster.

Endowed Scholarships and Webster Society and other Annual Scholarships are made possible by gifts from supporters. The generosity of these supporters provides for new opportunities, both in the number of scholarships available to students, as well as the variety of scholarship opportunities. This includes scholarships with a vital focus on global citizenship, championing careers in the STEM fields, and focused on encouraging Webster's talented student artists.

Each of these endowed and annual scholarships from supporters is unique, not only in its eligibility but in its creation. Supporters have made these gifts of education in memory of loved ones, in tribute to their education from Webster as alumni, to share in their passion of global citizenship by studying

abroad, or to assist future generations to excel in a particular career field important to them.

Webster University has also established many institutional scholarships to support our students. These scholarships were created to identify and fill areas of need not addressed by donor-funded scholarships. They are critical to providing opportunity and financial security to students as they pursue an undergraduate or graduate degree.

Access and Success

Scholarships at Webster University are key to access and success for Webster students. We hope this scholarship guide serves as a way for students to learn about financial options, made possible by supporters who believe in the gift of education. We encourage students to contact the Webster Office of Financial Aid to learn more about scholarship opportunities and how to apply (contact information can be found at the end of this guide).

Endowed Scholarships

Endowed scholarships, which exist in perpetuity, create a legacy that lasts from one generation to the next because the principal remains intact while only a portion of the earnings is used to provide financial aid. Endowed scholarships may be named for the supporter or for someone whom a supporter wishes to memorialize, honor or celebrate. Currently, a minimum contribution of \$25,000 is required to establish an endowed scholarship at Webster University. The University's endowment expenditure rate is established by its Board of Trustees. Currently, it is the average of the preceding 12 quarters as of the preceding December 31, multiplied by 4.5 percent, less administration fees.

University-wide Scholarships

"I am grateful for people like my scholarship donors, who see as much value in education as I do. As a future art educator in the Missouri school districts, I will keep in mind the kindness others have shown me, and use it to empower future generations."



Amra Halilovic '22
Barthel Family Endowed
Scholarship Fund

African American Alumni Chapter Association Scholarship Fund

Established by African American Alumni Chapter of Webster University

Scholarship Requisites

Academic 3.0 GPA, Soph, Jr, Sr
Demographic U.S. Citizen, Have worked in the African-American community or

have an interest in African-American issues

Other --

The African American Alumni Chapter of Webster University established this scholarship fund in 1999. Its purpose is to provide educational assistance to deserving and qualified undergraduate students at Webster University, with a preference for those who have worked in the African-American community or have an interest in African-American issues.

Barthel Family Endowed Scholarship Fund

Established by Barthel Family

Scholarship Requisites

Academic 3.0 GPA, Webster Groves, MO (Main), Junior or Senior
Demographic --
Other --

Sisters Catherine Barthel '24, Genevieve Barthel Luepke '26, and Marguerite Barthel O'Donnell '28 enriched Webster University as students, alumnae and benefactors. Catherine, subsequently known as Sister Alexander, entered the Loretto Order (founders of the University) and served as the school's registrar.

Members of the Barthel family celebrate the sisters' legacy through the establishment of The Barthel Family Endowed Scholarship Fund that will provide perpetual scholarship assistance in their memories.

Charles E. Beech Leadership Endowed Scholarship Fund

*Established by Charles E. Beech**

Scholarship Requisites

Academic 3.0 GPA, Geneva Campus, Undergraduate, Full-time student
Demographic Preference for residents of Kosovo or Nepal. However, persons from all national origins are eligible
Other Demonstrated leadership skills and an ability to lead on campus, May elect to study

* Deceased

abroad at other Webster campuses for up to one year

Mr. Charles E. Beech, affectionately known as "Charlie", initially joined what was then Webster College in St. Louis in 1974 as Assistant Director of Admissions. In 1977 Webster appointed him as Acting Director of Admissions & Financial Aid. In 1983, Charlie returned to the renamed Webster University in St. Louis as the Director of Admissions following an absence of five years. During the seven-year period until 1990, Charlie created the Study Abroad Office and initiated an Asian recruitment plan with recruitment trips to Japan and Hong Kong. He also served as Chair of both the Admissions Committee and the Scholarship Awards Committee.

By the early 1990's, Charlie's professional life was devoted to Webster's international agenda. He was asked to implement a new International Office of Special Study Opportunities that included both international recruitment and admissions plus study abroad. Furthermore, Charlie was invited to join the Committee for Europe, the Middle East and Africa (CEMA) sponsored by the Council of International Schools (CIS). In this volunteer role, Charlie led or assisted the tour leader of CIS/CEMA Recruitment Tours to the Middle East, Western Europe, Scandinavia, Eastern Europe, and Russia. Simultaneously Charlie's other focus was the refinement and enhancement of Webster's outreach strategy for Asia. In addition, Charlie had responsibility for the coordination and oversight of Webster's worldwide recruitment efforts aimed at international students.

By 2000 the four international campuses in Europe were in need of additional leadership and integration related to their recruitment and admissions efforts. This need resulted in Charlie being offered and accepting an enhanced role that was based at the Geneva campus. Here he served as Director of Admissions, Retention and Enrollment Management. A significant portion of his new portfolio was coordination of Webster's worldwide recruitment efforts. This led to his appointment as Deputy Director for Geneva operations including admissions, student services and housing. Six months prior to his

retirement Charlie was appointed Interim Director of Webster University Geneva.

When evaluated by the numbers, Charlie's lifetime career in higher education administration includes 47 years with ever-increasing levels of responsibility. Happily, 36 of those years were spent working on behalf of Webster College/University with a special focus on Webster's international programs. Through his commitment and dedication to Webster, Charlie has demonstrated his genuine belief in the importance of higher education in an international setting across cultures. This belief has led him to support Webster University Geneva's Scholarship Program since 2000.

Further, Charlie has built up a strong network of friends and supporters of not only the students, alumni, faculty, and administrative staff on the University campus in the Geneva, but in his role as Associate Vice President International Enrollment across Webster University's worldwide campuses network and beyond, including the international school guidance community, professional colleagues in international enrollment management, parents, and friends.

Charlie Beech's legacy at Webster will be celebrated and reinforced with this endowed scholarship bearing his name. Students who benefit from this endowed scholarship shall be proud recipients of the Charles E. Beech Leadership Scholarship Endowed Fund.

Class of 1964 Endowed Scholarship Fund

Established by Marsha Mason '64, Karen Luebbert '64, Katherine Ann Woodward '64, Dale Morse '64, Nancy Noble Smith '64, Kate Springs Oakley '64 and other members of the Class of 1964

Scholarship Requisites

| | |
|--------------------|---------------------------------------|
| Academic | 3.0 GPA, Undergraduate, Full-time |
| Demographic | U.S. Citizen or international student |
| Other | Demonstrated financial need |

In honor of our 50th honor class reunion in 2014 and in memory of those classmates who died before our 50th Reunion, and in celebration of Webster's Centennial year in 2015, the Class of 1964 has

established The Class of 1964 Endowed Scholarship Fund. This fund also exists to celebrate and honor the memory and values of the Sisters of Loretto who taught us at Webster College from the fall of 1960 through the spring of 1964.

This fund was established to provide future first-generation college students the opportunity to benefit from the same spirit and caliber of education at Webster that we so appreciated, many of us first generation college students ourselves.

As a class containing members who have served our communities through our successes in the non-profit sector, educational leadership, film and theatre, as well as the first class of Webster to graduate male students, we are committed to support future first generation college students' ability to enjoy the same advantageous educational opportunities as we and forge new ground in the world that awaits them.

- Members of the Webster Class of 1964

Class of 1965 Endowed Scholarship Fund

Established by members of the Webster Class of 1965

Scholarship Requisites

| | |
|--------------------|---|
| Academic | Freshmen or Transfer |
| Demographic | -- |
| Other | Demonstrated financial need, Demonstrate sustained community service and leadership |

In honor of our 50th honor class reunion in 2015 and in memory of those classmates who passed before our 50th Reunion, the Class of 1965 has established the Class of 1965 Endowed Scholarship Fund. This fund also exists to celebrate Webster's Centennial year in 2015 and to honor the memory and values of the Sisters of Loretto who taught us at Webster College from the fall of 1961 through the spring of 1965.

- Members of the Webster Class of 1965

Classes of 1966-1969 Endowed Scholarship Fund

Established by the Classes of 1966-1969

Scholarship Requisites

| | |
|--------------------|-------------------|
| Academic | Full-time student |
| Demographic | -- |
| Other | -- |

As Alumni of Webster University, we establish this endowed scholarship to pay forward the rewards of our excellent Webster education. The years of the sixties were exciting, changing times at Webster College. We became fully coeducational, started expansion of the campus to Kansas City, and the Sisters of Loretto transferred ownership of the school to a lay board of directors operating Webster as a private, nonprofit, non-denominational university. We were on the ground floor to experience the energy of the growth of Webster and, as alums, we have watched our alma mater continue on its path of expansion and excellence.

In these times of the sixties, we were encouraged to believe that anything is possible to achieve, and we took that confidence into our world as we established our own paths. We seek to support future Webster University students, knowing that our university will recognize their individualities and provide them with the confidence to achieve their dreams.

Thank you, Webster University. We are proud Webster alums and wish the recipients of our scholarship the best of success.

DeWitt and Caroline Van Evera Foundation Endowed Scholarship Fund

Established by Dewitt and C. Van Evera Foundation

Scholarship Requisites

| | |
|--------------------|------------------------|
| Academic | 3.0 GPA, Undergraduate |
| Demographic | -- |
| Other | -- |

The DeWitt and Caroline Van Evera Foundation was created by DeWitt Van Evera, a mineral engineer and businessman from Salt Lake City, and was supplemented by his sister, Caroline. Caroline was an artist who portrayed the faces and habits of diverse peoples in Europe, Africa, and Central and South America. The intent of the Van Everas was to share their good fortune by giving support to select

charitable, educational and cultural causes that serve significant needs of society.

Don Maland International Conflict Resolution Endowed Scholarship Fund

Established by Ellen Maland '70 and Donald B. Adams

Scholarship Requisites

Academic Any degree or major, Undergraduate or Graduate, Interest in international conflict resolution, preference for Middle East

Demographic --

Other --

Ellen Maland '70 - "I offer this scholarship fund in honor of the memory of my youngest brother, Don Maland, who was killed in a terrorist attack at the Rome airport in 1985, an attack staged by a radical Palestinian organization called Abu Nidal. Don was a young man, just turned 30, who had earned a degree in business and was employed by Ford Aerospace in a project laying fiber optic cable in Egypt. He had lived for several years in Cairo, where he had fallen in love with an Egyptian co-worker and was in the process of learning Arabic and converting to Islam in order to secure permission from the woman's family to marry her."

"All three of my brothers met in Rome to spend the Christmas of 1985 together and, two days later, Don and my older brother went to the Rome airport to arrange their further travel. They were standing in line at a counter next to the El Al counter when gunmen from Abu Nidal opened fire in attacks that were carried out simultaneously at the Rome and Vienna airports. Both of my brothers were shot, Don in the head and my other brother in the leg. Don underwent surgery but died that night."

"There are many ironies in this story, as there are in any tragedy. My brothers weren't 'supposed to' be at the airport that day; their tickets were for the following day, but they were trying to change their flights. Don was very sympathetic to the plight of the Palestinians and probably would have been an advocate for their point of view had he lived. But

none of this matters when it comes to terrorist acts, as we well know."

"As I have tried to come to terms with this loss over the years, I have found my attention drawn to reading and thinking about the seemingly insoluble problems of the Palestinian-Israeli conflict, as well as the many other very complex struggles going on in this part of the world, especially in more recent years. I have no great insights into these problems, but nonetheless feel that the search must go on for peaceful solutions to conflicts. It is because of this -- and my wish to keep my brother's memory alive -- that I've chosen to support students who have an interest in exploring these issues."

Dr. Elizabeth J. & Arthur Serapin Memorial Endowed Scholarship Fund

Established by Elizabeth Jane Serapin, MBA '96

Scholarship Requisites

Academic 3.0 GPA for Undergraduate, 3.5 GPA for Graduate, Undergraduate or Graduate, Part-time student required

Demographic U.S. Citizen (no dual citizenship)
Other Prefer single parent

This scholarship is established by Webster University to perpetuate Arthur and Elizabeth Serapin's memory and propel the academic achievement of degree-seeking single parent students.

Dr. John W. Rice, Jr. Endowed Scholarship Fund

Established by John Winston Rice Jr. and Webster alumni and friends

Scholarship Requisites

Academic 3.0 GPA Undergraduate for students starting a GRAD degree, 3.5 GPA for current Graduate students, Space Coast, Graduate

Demographic --

Other --

Dr. John Winston Rice, Jr. has led education, community, and alumni program efforts at Webster University's Space Coast Campus since 1993. Those

efforts have heightened the University's influence in the region creating added value to a Webster degree. His accessibility to students and commitment to alumni programs foster a supportive environment in which all are encouraged to strive for excellence. Dr. Rice's dedication to students, the University, and the community have inspired others to honor his work through a permanent scholarship that bears his name.

Dr. Julian Z. Schuster Endowed Scholarship Fund

Established by the Peggy Sansone Family Foundation

Scholarship Requisites

| | |
|--------------------|-----------------------------|
| Academic | -- |
| Demographic | -- |
| Other | Demonstrated financial need |

The Peggy Sansone Family Foundation created this endowed scholarship fund in honor of President Julian Z. Schuster to recognize his leadership that expands the opportunities for Webster students' success. Many members of the Sansone family have completed degrees at Webster University and have gone on to thrive in their lives and careers. They understand the value of a Webster degree. The family's preference for recipients of this scholarship will be students with the ambition to succeed as university students but whose talent exceeds their financial capacity. This scholarship is intended to overcome financial challenges for such students and to enable their enrollment.

- Anthony "Tony" Sansone, Jr., MA '84

Dr. Robert A. Spencer Endowed Scholarship Fund

Established by Anne R. Spencer

Scholarship Requisites

| | |
|--------------------|---|
| Academic | 3.0 GPA, Geneva, Undergraduate, Full-time |
| Demographic | -- |
| Other | -- |

Dr. Robert Spencer, Director Geneva Campus, Director General, Europe joined Webster University in St. Louis in January 1973. During his 40-year career

with Webster, he exemplified Webster's style of leadership, empowering students, faculty, staff, alumni and friends to go beyond their very best in their learning, teaching and supporting. His 'open door' policy, engaging conversation, and genuine belief in the importance of higher education in an international setting across cultures has drawn students to him and contributed to his overall popularity in the Webster community.

Since his appointment as Director Geneva Campus and Director General Europe in 1995, he has facilitated expansion into Europe and Africa and administered the development and expansion of the Geneva campus, providing more facilities and opportunities for students. He has built up a strong network of friends and supporters of the University in the Geneva community through active involvement in a number of important social, educational, diplomatic and business organizations. This has ultimately led to the Geneva campus becoming finally recognized as an established Geneva institution which has positively affected not only enrollments but also campus life.

Dr. Spencer's legacy at Webster will be celebrated and reinforced with this endowed scholarship bearing his name. Students who benefit from this endowed scholarship shall be proud recipients of the Dr. Robert A. Spencer Endowed Scholarship funds for years to come.

- Anne R. Spencer

E. Desmond and Mary Ann Lee Endowed Scholarship Fund

*Established by Mary Ann Lee**

Scholarship Requisites

| | |
|--------------------|------------------------|
| Academic | 3.0 GPA, Undergraduate |
| Demographic | -- |
| Other | -- |

E. Desmond and Mary Ann Lee were philanthropic leaders in the St. Louis community. They supported many local area organizations, including the St. Louis Symphony, the Opera Theatre of St. Louis, the Missouri Historical Society, the St. Louis Zoo, and the Missouri Botanical Garden. The Lees established this

* Deceased

scholarship as part of their strong commitment to education in the St. Louis area.

Elizabeth E. Halpin Endowed Scholarship

Established by Mary H. Gorman, Edward Eversman, Jennifer Weinland and Heather Lipe

Scholarship Requisites

Academic --

Demographic --

Other --

Elizabeth Halpin '36 funded an annual endowed scholarship for students in the Leigh Gerdine College of Fine Arts at Webster University.

Elizabeth Henry Espinosa Endowed Scholarship Fund

Established by Elizabeth Henry Espinosa '37*

Scholarship Requisites

Academic 3.0 GPA, Freshman

Demographic --

Other --

Elizabeth Henry Espinosa '37 established The Elizabeth Henry Espinosa Endowed Scholarship in 1997 through a life insurance gift in appreciation of the scholarship that she received as an undergraduate student. In recognition of both her professional achievements and her extensive volunteer work, Mrs. Espinosa received Webster University's Distinguished Alumna Award in 1982.

Enterprise Rent-A-Car Extended Campus Scholarship Fund

Established by Enterprise Rent-A-Car

Scholarship Requisites

Academic 3.0 GPA, Florida or South Carolina, Graduate

Demographic --

Other --

Enterprise Rent-A-Car is a privately held corporation. Its philosophy, to treat customers and employees well, extends into the community through the Enterprise Rent-A-Car Foundation. Webster University has enjoyed a long relationship with Enterprise, whose representatives have served on our Board of Trustees and the Alumni Association Board. This close relationship led to the establishment of this scholarship, supporting Webster students at any extended campus location in Florida or South Carolina.

Francetta Barberis S.L. & Jacqueline Grennan Wexler Endowed Scholarship Fund

Established by Jacqueline Wexler '48 and Paul Wexler**

Scholarship Requisites

Academic 3.0 GPA, Undergraduate

Demographic --

Other --

This endowed scholarship fund is named for Webster's sixth and seventh presidents. Sister Francetta Barberis, S.L. served from 1958 to 1965. Her successor was her good friend and protege, Jacqueline Grennan Wexler. In 1998, Mrs. Wexler and her husband Paul established the Francetta Barberis S.L. Memorial Endowed Scholarship Fund to honor Sister Francetta's memory. In 2001, the Wexlers established the Jacqueline Grennan Wexler Endowed Scholarship Fund to celebrate Mrs. Wexler's deep connection to Webster University as a student, administrator, and benefactor. The funds were combined in 2005 in symbolic tribute to their namesakes lifelong bond of friendship.

* Deceased

Janice W. Wilson Endowed Scholarship Fund

Established by Janice W. Wilson, MAT '79*

Scholarship Requisites

Academic --
Demographic --
Other

Janice Waner Wilson was born in 1924 in Los Angeles, CA and developed her independence early on, spending entire summers at the G.S.A. camp in Big Bear, CA and as the first female to have a newspaper delivery route in LA. She studied at the University of Southern California, but the beginning of World War II and youthful wanderlust led to her move to Chicago, IL, to 'experience the changing seasons.' At the end of the war, she met and married Max C. Wilson U.S.N. of Kansas City, MO. Together Max and Janice had two children: Thomas Wilson (wife Betty) and Marilyn Richards (husband Bill). Max began a long career with the Kansas City, MO Fire Department and Janice worked first in various banks then as an elementary school secretary in the Kansas City, MO School district for seven years, when

encouraged by the principal, she returned to college, obtaining her AA at Metro Jr. College in 1967 and a BA in Education at UMKC in 1969. She then began a 17 year career at Katherine Carpenter Elementary as a librarian and 'chief tooth puller' retiring in 1986. She completed her MA in Education at Webster University and was a Phi Kappa Phi and a member of the American Association of Women. Janice loved spending time at the family's Lake of the Ozarks cabin and traveling worldwide.

Joyce Garlick Peavy Endowed Scholarship

Established by Joyce G. Peavy

Scholarship Requisites

Academic 3.5 GPA, San Antonio, Undergraduate or Graduate, Part-time student
Demographic --
Other --

Joyce is originally from the State of Virginia. She was raised on a farm by a loving family with limited financial resources. Her parents instilled in her the importance of obtaining an education. Joyce was helped by so many that she felt in return she should help others achieve their educational goal.

Lawrence Jehling Endowed Scholarship Fund for International Students

Established by Lawrence Jehling

Scholarship Requisites

Academic Undergraduate
Demographic Non-U.S. citizen
Other --

The Lawrence Jehling Endowed Scholarship Fund for International Students is established to provide undergraduate scholarships in support of qualified international students.

Margaret A. Fuhry Endowed Scholarship Fund for Graduate Students

Established by M. Patricia Fuhry '77

Scholarship Requisites

Academic 3.5 GPA, Graduate
Demographic --

* Deceased

Other --

Margaret Fuhry '77 was Director of Advancement Services at Webster at the time of her sudden death. Margaret's mother, Cay, became a good friend and a committed volunteer of Webster's Development and Alumni Department. Cay was diagnosed with ALS in late summer 2006 but continued her volunteer work at Webster and at the Saint Vincent DePaul Society until her passing in early 2007. Cay and Margaret's memories are honored through this scholarship fund.

Marianne Dickhaus Knaup Endowed Scholarship Fund

Established by Kathianne Knaup Crane, Stephen Knaup, James Knaup, Mary Jo Knaup Crosby and friends of Marianne

Scholarship Requisites

Academic 3.0 GPA, Undergraduate or Graduate
Demographic --
Other Demonstrated financial need

This scholarship was created in memory of Marianne Dickhaus Knaup '67, herself a nontraditional student, who described Webster as a cutting-edge school, providing relevant, timely education and community service. She said, "I believe very much in the type of education that's offered here. Webster creates thinkers." This scholarship honors the generous support she and her husband Warren gave during their lifetimes to eight other scholarship funds at Webster to ensure access to a Webster education for other students.

Mary B. Arnold Endowed Scholarship

Established by Mary B. Arnold '42*

Scholarship Requisites

Academic Undergraduate
Demographic --
Other --

Mary B. Arnold '42 used to reminisce that tuition at Webster College was \$350 per year when she attended as a member of the class of 1942. Recognizing the high cost of education in 2002 and

beyond, she established The Mary B. Arnold Endowed Scholarship Fund to provide meaningful support to promising Webster University students.

Mary Brandau Maledon and W. Ed Maledon Endowed Scholarship Fund

Established by Mary Brandau Maledon, MA '82 and W. Ed Maledon**

Scholarship Requisites

Academic Interest in politics or law
Demographic Demonstrated interest in creating and promoting equal opportunities for all females
Other For students who desire to remain involved in the political process

McKillin Family Endowed Scholarship Fund

Established by Mary Sue McKillin Ealum '55

Scholarship Requisites

Academic 3.0 GPA, Freshman or transfer
Demographic --
Other --

Mary Sue McKillin Ealum '55 established this scholarship because "I am very grateful for the scholarship Webster College gave me in 1951 when I graduated from high school. My major in Mathematics and degree from Webster in 1955 gave me the background and opportunity to obtain a job with the U.S. Department of Defense. Five years later my employer sent me to Yale University graduate school for one year to study Astronomy. This additional study made it possible for me to obtain my Master's degree from Yale and also to be promoted to an excellent job. I feel that my whole future was affected by Webster because it is quite likely none of this would have happened without the scholarship they gave me many years ago. I hope that this scholarship will give some student at Webster University the same sort of opportunities to succeed in their work and in life."

* Deceased

Nancy Vogler-Wisleder Endowed Scholarship

Established by Nancy Vogler Wisleder '65

Scholarship Requisites

| | |
|--------------------|-----------------------------------|
| Academic | Demonstrates academic achievement |
| Demographic | -- |
| Other | -- |

Next Century Leaders Endowed Scholarship Fund

Established by friends of Webster University

Scholarship Requisites

| | |
|--------------------|----|
| Academic | -- |
| Demographic | -- |
| Other | -- |

In celebration of Webster University's first 100 years and its innovative, resilient and vibrant heritage, and in honor of the commitment that has persisted since Webster's founding in 1915 - to meet unmet needs - supporters, friends and leaders of Webster University have established the Next Century Leaders Endowed Scholarship Fund. This fund will provide critical support to Webster students and continue the tradition of transforming students for individual excellence and global citizenship. The ultimate goal of the fund is to create a university that achieves global impact in its next century.

O'Hara-Carter-Burkhardt Family Endowed Scholarship Fund

*Established by Genevieve P. O'Hara**

Scholarship Requisites

| | |
|--------------------|---|
| Academic | Accounting or Political Science, Freshman or transfer |
| Demographic | -- |
| Other | -- |

It is the fond hope of Genevieve P. O'Hara to honor the O'Hara Family by gifting a scholarship to a student who majors in either political science or accounting. My sister, Jane O'Hara Carter, was a distinguished alumna of the Class of 1948. Her daughter, Mary Ann Carter, has chosen a career in the political arena, and while her mother was a gifted

poet, would be delighted with the designated scholarship. I would also like to honor my niece, Mary O'Hara Burkhardt, and her husband, David Burkhardt, Webster class of 1996, a graduate in accounting. My own connection to Webster is through the Sisters of Loretto, those wonderful women who are surely the salt of the earth. May the recipients of this scholarship savor the wisdom that they and Webster have so long imparted.

Olga and Emil Schuster Endowed Scholarship Fund

Established by Drs. Julian Z. and Sanya Schuster

Scholarship Requisites

| | |
|--------------------|---|
| Academic | 3.5 GPA |
| Demographic | -- |
| Other | Demonstrated financial need, To encourage diversity in all forms, selection of recipient alternate between GPA and financial need each year |

Robert E. and D. Jean Powell Memorial Endowed Scholarship Fund

Established by Elizabeth J. Stroble and Paul E. Stroble

Scholarship Requisites

| | |
|--------------------|---|
| Academic | Undergraduate, Demonstrated interests in the areas of leadership, diversity and inclusion |
| Demographic | Worked in or have demonstrated interest in women's issues |
| Other | Demonstrated financial need |

This endowed scholarship is established by Drs. Elizabeth (Beth) and Paul Stroble in memory of Beth's parents, Robert E. and D. Jean Powell. Bob Powell (1924-1995) was born in Tennessee, and Jean McNabb Powell (1927-2013) in Texas. They met as pen pals during World War II, after which they married and moved first to Wyoming and then to the Chicago area for post-war employment. Bob drilled artesian wells before going into business as an independent home renovation contractor. Jean returned to work in the banking industry when Beth and her brother Pat were both in school. She advanced in the bank, ending her

* Deceased

career as President and Director of the Heritage 1st National Bank of Lockport, Illinois. Their lives evidenced a willingness to take risks, work hard, and give generously to their family, church, and community. Not college graduates themselves, Bob and Jean championed educational opportunities for others, advocated for the underrepresented, and took pride in Beth's educational and career accomplishments.

- Drs. Elizabeth (Beth) and Paul Stroble

Sam and Marilyn Fox Endowed Scholarship Fund

Established by Sam and Marilyn Fox

Scholarship Requisites

| | |
|--------------------|-----------------------------|
| Academic | Undergraduate |
| Demographic | -- |
| Other | Demonstrated financial need |

Marilyn has dedicated years in service to Webster University. She served as a Trustee from 1990 through 1999, again from 2000 through 2010, and for a third term from 2012 through 2019. Marilyn also served on the Webster Society board of directors, acting as board president from 2004 through 2005. In addition to their generous annual scholarship support, Sam and Marilyn made a significant leadership campaign gift to support those scholarships in perpetuity by establishing this fund. Webster is not the only institution to benefit from Marilyn's leadership and generosity. Her involvements include serving on the boards of the Jewish Community Center, Jewish Federation, Missouri Botanical Garden, Missouri Historical Society, St. Louis Variety-the Children's Charity, and Women of Achievement, a history-making term as the first woman president of the Jewish Community Center (JCC) where she also served as chair of the JCC's capital campaign. She has also worked with the United Way, Girl Scouts, National Council of Community and Justice, Hillel, and the Old Newsboys Children's Charity.

Sisters of Loretto Founders Endowed Scholarship Fund

Established by Marianne Knaup '66, Betty Mueller* '52, MAT '83, Lillian Keupper '44, Mary Ione Berry '47, Doris Federhofer* '38, Marie Markowski* '45, Mary Joan Kenny '58, Marilyn Mier '58, Annie Esther Stevens,SL, Barbara Ann Barbato, SL, MA '81, Audrey Dietrich* '45, and Margie Dougherty* '46*

Scholarship Requisites

| | |
|--------------------|---|
| Academic | 3.2 GPA, Junior or Senior |
| Demographic | Demonstrated interest in creating and promoting equal opportunities for all females |
| Other | Education has been interrupted |

The Sisters of Loretto founded Webster College in 1915 with a vision of educating Catholic women. The Sisters placed Webster on the cutting edge of higher education with their determination to promote their standards with moral courage. Alumni established The Sisters of Loretto Founders Scholarship Fund to honor the Sisters of Loretto as the founders of Webster University. The preference is for the scholarship to be awarded to women 25 years of age or older whose education has been interrupted.

Solon E. Summerfield Endowed Scholarship Fund

Established by Solon E. Summerfield Foundation

Scholarship Requisites

| | |
|--------------------|---------------------------------------|
| Academic | 3.3 GPA, Sophomore, Junior, or Senior |
| Demographic | -- |
| Other | -- |

Solon E. Summerfield was committed to the support of education. He established the Solon E. Summerfield Foundation in 1939 and soon expanded its philanthropy to include small colleges and universities. In 1993 the Foundation established The Solon E. Summerfield Endowed Scholarship; the first scholarship was awarded in 1996 at Webster University.

St. Louis Public Schools Honor Graduate Scholarship

Established by Kenneth W. Kousky

Scholarship Requisites

| | |
|--------------------|--------------------------------------|
| Academic | Undergraduate |
| Demographic | Graduate of St. Louis Public Schools |
| Other | -- |

Ken Kousky is a modern-day pioneer of IT software and services. An educator and an entrepreneur, Ken served on the board of the Foundation of the St. Louis Public Schools and chaired a computer-training project at Soldan High School, which led to his deep commitment to St. Louis public school students. Ken established The St. Louis Public Schools Honor Graduate Endowed Scholarship to support St. Louis public school graduates pursuing undergraduate degrees at Webster.

Tarlton Corporation Endowed Scholarship Fund

Established by Tarlton Corporation

Scholarship Requisites

| | |
|--------------------|----|
| Academic | -- |
| Demographic | -- |
| Other | -- |

Tribute Endowed Scholarship Fund

Established by Webster University Donors

Scholarship Requisites

| | |
|--------------------|---|
| Academic | 3.0 GPA is Undergraduate or 3.5 GPA if Graduate |
| Demographic | -- |
| Other | -- |

The Tribute Endowed Fund was established as a collection vehicle for gifts intended to honor and/or perpetuate the memory of donors' loved ones. In all cases, the donors wish is to pay tribute to their loved ones through providing scholarship support to Webster University students.

Warren C. Knaup Memorial Endowed Scholarship Fund

Established by Marianne Knaup '66*

Scholarship Requisites

| | |
|--------------------|---------------|
| Academic | Undergraduate |
| Demographic | U.S. Citizen |
| Other | -- |

The estate of Warren Knaup established The Warren C. Knaup Endowed Scholarship through the guidance of his wife, alumna Marianne Knaup '67, who has served as a University Trustee. Friends have also supported the fund to recognize Warren's belief in education and his lifelong support of the University.

Webster University Student Government Association Student Leader Endowed Scholarship Fund

Established by the Webster University Student Government Association

Scholarship Requisites

| | |
|--------------------|------------------------|
| Academic | 3.0 GPA, Undergraduate |
| Demographic | -- |
| Other | -- |

This scholarship is established by the Webster University Student Government Association to recognize student leaders and to promote academic excellence found in such student leaders.

William Randolph Hearst Endowed Scholarship Fund for Disadvantaged Students

Established by William Randolph Hearst Foundation

Scholarship Requisites

| | |
|--------------------|----------------------|
| Academic | Freshman or transfer |
| Demographic | -- |
| Other | Disadvantaged |

Publisher and philanthropist William Randolph Hearst created two foundations in the 1940's to address challenges in social services, education, health, and culture. Today, the Hearst Foundations help private liberal arts institutions offer quality higher education to underserved populations by establishing endowed scholarship funds. The William Randolph Hearst

* Deceased

Endowed Scholarship Fund at Webster University has provided support to deserving students since 1995.

William Thornton Memorial Endowed Scholarship Fund

Established by Laurie Jean Brady, MA '89

Scholarship Requisites

Academic 3.0 GPA, San Antonio, Undergraduate or Graduate, who has completed 1 or more terms

Demographic --

Other --

A member of the faculty and a student advisor for Webster University's San Antonio campus from 1976 until his sudden death in 1998, William Thornton was admired and respected by everyone who knew him. Dr. Ellis Harbin, former senior director of Webster's San Antonio campus, once said, "Bill's contributions in the classroom and personal attention to the needs of the students distinguished him as an outstanding example of Webster at its best." The William Thornton Memorial Endowed Scholarship supports deserving students at the San Antonio campus.

College of Humanities and Social Sciences or Leigh Gerdine College of Fine Arts

University Lane Foundation Endowed Scholarship Fund

Established by Anonymous

Scholarship Requisites

Academic 3.0 GPA, Religious Studies or Music, Undergraduate

Demographic --

Other Demonstrated financial need

In August 2000, anonymous donors established The University Lane Foundation Endowed Scholarship Fund to benefit a junior Religious Studies major. Each year a deserving student receives support to travel abroad for the purpose of enhancing their studies.

College of Humanities and Social Sciences, College of Science and Health, or School of Education

Liberal Arts & Sciences and Education Endowed Scholarship

Established by Anonymous Donors

Scholarship Requisites

Academic 3.0 GPA, Education, Undergraduate

Demographic U.S. citizens or permanent residents

Other --

"Thank you from the bottom of my heart for making this scholarship an opportunity. It has gone to make furthering my education a possibility. I am so touched and inspired by the generosity of this scholarship. It has been my dream since I was young to study ecosystems and find ways to continue to support them and support the humans living within them. Because of your donation, I will go to Ecuador and learn from indigenous teachers in the Amazon about this very subject. Thank you so much for your donation."

Sky Karakos '22
The Webster University
Endowed Arts & Sciences
Scholarship



College of Humanities and Social Sciences

Adelaide G. Heverly Welge Endowed Scholarship Fund 1

Established by Isobel H. Mack

Scholarship Requisites

| | |
|--------------------|---------------------------------------|
| Academic | English, Junior or Senior |
| Demographic | Commuter, resident of South St. Louis |
| Other | -- |

When Adelaide G. Heverly Welge graduated from Altoona (PA) High School in 1915, her principal encouraged her to advance her education and helped her secure a scholarship to the University of Pittsburgh. Mrs. Welge died in 1996 at the age of 100, leaving a legacy of educational endowments in both Altoona and St. Louis. Her nephew, Donald Mack, with help from Mrs. Welge's estate, established two scholarship funds at Webster

University, one in math and the other in English, for commuter students in St. Louis.

Arthur M. Sandler Endowed Scholarship Fund

Established by Vicki Woods '87, MA '00

Scholarship Requisites

| | |
|--------------------|--------------------------------------|
| Academic | 3.0 GPA, Human Rights, Undergraduate |
| Demographic | -- |
| Other | -- |

The Arthur M. Sandler Endowed Scholarship Fund was established by his spouse, Vicki Woods, and the Sandler and Woods families to perpetuate the memory of Professor Sandler and promote the study of Human Rights at Webster University. Professor Sandler was a member of the Philosophy Department from 1970 until his death in 2008. Art served at various times as President of the Faculty, Chair of the College of Arts & Sciences, Chair of the Department of Philosophy, and Chair of the Department of Interdisciplinary Studies. He is remembered as a patient, kind, tireless, warm, and funny educator and activist for human rights - and, he would want you to know, a devoted fan of the New York Knickerbockers basketball team.

Art's commitment to human rights activism and education reflected both his deep respect and compassion for other people and his family's Jewish roots in Eastern Europe. In the 1980s, he immersed himself in working for human rights in Central America, especially in Guatemala, and this work inspired him to create Webster's highly successful human rights curriculum, including the first undergraduate major in Human Rights in the United States.

Art believed not only in studying but "doing" human rights. This fund honors his desire to support students willing to combine serious study with concrete action to build a more just global society. Art would not insist that beneficiaries root for the Knicks, but he would advise those who work in what can be a heartbreaking field to keep their sanity by enjoying sports, music, movies or whatever else brings some diversion in a world in need of so much healing.

Harry J. Cargas Endowed Scholarship Fund

Established by Millie Cargas and the Cargas Family

Scholarship Requisites

Academic 3.0 GPA, Human Rights, Undergraduate, Interest in human rights, global citizenship, international

Demographic --

Other --

The Harry J. Cargas Endowed Scholarship Fund was established by his wife Millie and the Cargas family to perpetuate the memory of Professor Emeritus Cargas and promote the study of Human Rights at Webster University. Professor Cargas was a member of the English Department from 1970 until his death in 1998. He was a scholar and an athlete; a devout Catholic who was respected in the Jewish community for his work on the Holocaust; a grizzly guy with a heart of putty; a family man who recognized his connections to his community and to his God. He was a distinctive and distinguished presence on the St. Louis campus.

Harry was the author of more than 2,500 articles and 32 books, including *Conversations with Elie Wiesel*, *Religious Experience and Process Theology*, and *Daniel Berrigan and Contemporary Protest Poetry*. He counted Nobel Prize winner Elie Wiesel among his friends. Harry's interests ranged widely. At Webster he taught courses on the novels of Kurt Vonnegut (also a personal friend), Native American literature, Latin American literature, protest literature, and many more eclectic subjects. In addition to teaching in the English Department and serving as its chair, Harry taught history and religion courses, led the Art Department for a time, and served as athletic director in the late 1980s.

He was well known to St. Louisans for his 25 years of radio broadcasts on KWMU radio. He was also an internationally recognized public speaker, having lectured in eight foreign countries and at more than 40 U.S. colleges and universities. He received numerous awards including the Human Rights Award from the United Nations Association, the Eternal Flame Award from the Anne Frank Institute, and the

Tree of Life from the National Jewish Fund. In 1980, Harry was appointed by President Carter to be one of the original members of the U.S. Holocaust Memorial Council, which laid the groundwork for the Holocaust Memorial Museum in Washington, D.C. Other appointments included the executive council of the U.S. Holocaust council, vice-president of the Annual Scholars' Conference on the Holocaust, and the honor of being the only Catholic ever appointed to the International Advisory Committee of Yad Vashem, Israel's Holocaust memorial.

James R. & Consuelo E. Gallagher Endowed International Languages Scholarship

*Established by Consuelo E. Gallagher**

Scholarship Requisites

Academic 3.0 GPA, Languages (non-native), Undergraduate

Demographic --

Other --

Consuelo E. Gallagher taught Spanish language and culture at Webster from 1945 until her retirement in 2004. She created and directed the English as a Second Language program to benefit international students. Her dedication, philanthropy, and affection are woven into the fabric of Webster University's history.

Marianne & Peter Gleich Endowed Scholarship Fund for the Study of the French Language

Established by Marianne E. Gleich '66 & Peter A. Gleich

Scholarship Requisites

Academic 3.0 GPA, French, Webster U.S. Campuses, Undergraduate

Demographic U.S. Citizen

Other For a minimum of two full-time traditional undergrad students

The Gleichs established this fund because "It has long been a goal of ours to help expand the horizons of others through education. We have been fortunate to have had many interesting and challenging experiences which are a direct result of the outstanding education we received in St. Louis. By

giving back to Webster University, we are expressing our appreciation to the University for laying the ground work for our future. It is not an exaggeration to say that without Marianne's foundation in French, our paths would likely have been entirely different. Doors opened for both of us by way of language capabilities nurtured by Webster's outstanding foreign language staff and by way of Peter's superb business background provided by another university in St. Louis. We are pleased to provide the endowed scholarship in French Language Studies with the hope that it will aid others in fulfilling their dreams. "

Michael J. Salevouris Endowed Scholarship Fund for History

Established by Debra Mack Larson and Allen Larson, Amy Lorenz-Moser '97, Jennifer Jezek-Taussig '96, Matthew Brockmann '91, Michelle Ann Deeba, MAT '97, Daniel C. Hellinger, Michael Salevouris, Peggy Brockmann '84, '89 and Ted Hoef

Scholarship Requisites

| | |
|--------------------|------------------------------------|
| Academic | 3.0 GPA, History, Junior or Senior |
| Demographic | -- |
| Other | -- |

Dr. Michael J. Salevouris, professor of European History at Webster University, has been an exemplary figure of academic excellence and dedication to his students for over forty years. Well known for his depth of knowledge, engaging lectures, and wry sense of humor, his students remember their days at Webster with great fondness due to his caring and exacting approach to their education and his concern for and interest in them as people. Eschewing the easy approach to pedagogical assessment, Dr. Salevouris frequently assigned papers of significant depth and dutifully graded each and every one with great care. Through his publications and reputation in historical methodology, Michael also earned wide recognition and respect in his field.

Having served on numerous faculty committees over the years as well as having chaired the department on more than one occasion, Michael exemplifies the Webster tradition of faculty-wide participation in the life of the institution.

Dr. Salevouris' legacy at Webster will be celebrated and reinforced with this endowed scholarship bearing his name. Students in the School of Arts and Sciences who display scholarly seriousness in historical inquiry shall be the proud recipients of the Salevouris Scholarship funds for years to come.

Nancy Powers Pritchard Endowed Creative Writing Scholarship Fund

Established by Nancy Powers Pritchard '93

Scholarship Requisites

| | |
|--------------------|---|
| Academic | 3.0 GPA, Literature/Language, Webster Groves, MO (Main), Freshman or transfer |
| Demographic | -- |
| Other | -- |

The Nancy Powers Pritchard Endowed Creative Writing Scholarship Fund is established by Nancy Powers Pritchard '93 to promote the study of Creative Writing at Webster University.

"All that stood between me and my degree was a lack of confidence. But when my youngest child started college, I did too. My time at Webster was transforming. The Independent Learning Experience program showed me I had real strengths and had developed the tools I needed to succeed at a level higher than anything I had previously imagined. In the Literature and Language program my professors introduced me to a world of stimulating thought, challenging ideas and to heady conversations I still cherish. In the Creative Writing program, I was encouraged to write honestly, not to hold back but to write to the heart of the matter. I learned more than technique; I learned who I was and what I was capable of. Having recently completed my MFA in Creative Writing at UM-Saint Louis (barely ahead of social security), I know it's never too late to grow in knowledge and confidence. I had the financial resources to afford Webster University-if I hadn't, it might have presented an overwhelming obstacle to my education. I want this scholarship to provide other aspiring writers-of any age-the opportunity I had to achieve my dreams. "

Pauline and Francis Lonsway Endowed Scholarship Fund at Webster University

*Established by Francis and Pauline Lonsway**

Scholarship Requisites

| | |
|--------------------|--|
| Academic | 3.5 GPA, Liberal Arts, Webster Groves, MO (Main), Freshman or transfer |
| Demographic | -- |
| Other | -- |

The Pauline and Francis Lonsway Endowed Scholarship Fund is established to promote the undergraduate study of the Liberal Arts at Webster University's Main Campus. We began our relationship and support of the mission of the University in the fall of 2005. The two of us have been engaged in the University's mission through Francis's teaching at the Louisville Metropolitan Campus and our involvement in the development and support of staff and alumni events.

Reta Madsen Endowed Scholarship Fund

Established by Markus Trice '75

Scholarship Requisites

| | |
|--------------------|--|
| Academic | 3.0 GPA, English, Sophomore, Junior, or Senior |
| Demographic | -- |
| Other | -- |

The Reta Madsen Endowed Scholarship Fund for English is created through the vision of family, alumni, faculty, staff and friends and was established in Dr. Madsen's honor at the request of faculty members in the English Department. This honor was requested because of her lasting impact upon the lives of hundreds of students, her creation of the English department as it now exists, and her contribution to the fabric of the whole University during her thirty-year tenure at Webster. Dr. Madsen is known and remembered for the rigor and brilliance of her teaching and her fierce advocacy on behalf of her students. In her teaching, advising, and community service, Dr. Madsen enacted a belief that the truth we tell each other-through literature and in person-is a means to a conscious and productive life. It is profoundly appropriate that the scholarship in

her name will provide practical means for sound intellectual growth and the creative pursuit of truth. The scholarship supports full-time undergraduate English Majors with sophomore status and above in the College of Humanities and Social Sciences.

Rosita Endowed International Languages Scholarship

*Established by Consuelo E. Gallagher**

Scholarship Requisites

| | |
|--------------------|--|
| Academic | 3.0 GPA, Languages (non-native), Undergraduate |
| Demographic | -- |
| Other | -- |

The Rosita Endowed International Languages Scholarship is established by Consuelo Gallagher, to perpetuate her mother's memory and to promote internationalism through the study of languages and culture.

Sister Mary Mangan Scholarship Fund

Established by Marianne Knaup '66 & Warren Knaup**

Scholarship Requisites

| | |
|--------------------|---|
| Academic | History, Politics, Law, Government, Undergraduate |
| Demographic | U.S. citizens or permanent residents |
| Other | -- |

Sister Mary Mangan graduated from Webster College in 1935 and went on to earn graduate degrees in history and political science. She was the first Webster faculty member to teach at our Geneva Campus. Awarded professor emeritus status in 1979, Sister Mary continued to teach international and African-American politics until 1998. She earned the Outstanding Educator in America Award in 1972 and the Webster University Declaration of Merit Award in 1997. Sister Mary died in 2007, but her legacy lives on through this endowed scholarship fund, which was created by donors to honor Sister Mary's work in teaching history.

* Deceased

William HuddlestonBerry Memorial Endowed Scholarship

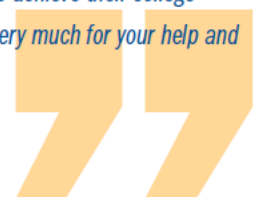
Established by Jon Atkinson '74 and Linda Woolf

Scholarship Requisites

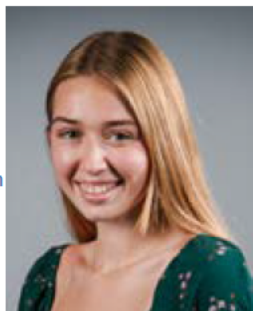
| | |
|--------------------|---------------------------------------|
| Academic | Behavioral Sciences, Junior or Senior |
| Demographic | -- |
| Other | -- |

This scholarship was established to perpetuate William's memory and to promote the study of the behavioral sciences at Webster University.

"I am so thankful to be a recipient of the 2021-2022 Marianne & Peter Gleich Endowed French Language Scholarship. The generosity of this scholarship is helping toward my goal of earning my degree, and for that, I am more appreciative than I can express. I'm thrilled to have received this scholarship and to have the opportunity to say thank you for the support and aid. Without donors such as you, many more students would continue to struggle to achieve their college goals. Thank you so very much for your help and generosity."



Tasha Roberts '22
The Marianne & Peter Gleich
Endowed French Language
Scholarship



College of Science and Health

Charles S. and Patricia Drew Endowed Scholarship Fund

Established by Charles Drew and Patricia Ann
Hellerud Drew**

Scholarship Requisites

| | |
|--------------------|---------------------------------|
| Academic | 3.0 GPA, Science, Undergraduate |
| Demographic | -- |
| Other | -- |

Patricia and Charles S. Drew, Jr. were longtime supporters of Webster University. Charles served on the Board of Trustees and as Chairman of the Daniel Webster Society Board. They established The Charles S. and Patricia Drew Endowed Scholarship to promote the study of environmental studies. Charles passed away in 2004 shortly after the dedication of the Emerson Library Archives, named in memory of his grandfather, the Very Rev. Sir George Adam Smith, D.D., Chaplain to Kings.

Gary D. Clark, Founder & Professor Emeritus Endowed Scholarship for Nurse Anesthesia Fund

Established by Gary D. Clark

Scholarship Requisites

| | |
|--------------------|--|
| Academic | 3.5 GPA, Nurse Anesthesia program, Core values (see full agreement) |
| Demographic | -- |
| Other | Incoming first-year students to the program, Director/Chair to select with faculty |

This scholarship will be awarded to a student in the Nurse Anesthesia program who satisfies all academic and clinical program requirements. The awardee must demonstrate the four core values of the program: Leadership, Research, Excellence in Clinical Practice and Life Long Learning.

* Deceased

Joanne Dueber Fogarty Endowed Scholarship

Established by Joanne D. Fogarty '57

Scholarship Requisites

Academic 3.0 GPA, Sciences, Freshman or transfer

Demographic

Other

Joanne Dueber Fogarty '57 established this fund because "The undergraduate education that I received at Webster College was made possible by a scholarship. I was able to complete a degree in Biology and Chemistry and to work in the fields of clinical chemistry and biomedical research through the generosity of the Sisters of Loretto and donors unknown to me. The education I received has immeasurably improved my life and promoted many lifelong interests. In order to allow future students at Webster University to have the same opportunity, I wished to endow a scholarship. It is my hope that those students will use their education to improve their lives, promote the welfare of others and, when able, contribute to the education of future students at Webster University."

Mercy Endowed Scholarship for Nursing

Established by Mercy

Scholarship Requisites

Academic 3.0 GPA, BSN, Nursing Department

Demographic --

Other Demonstrated financial need

Peggy Fay & Walter Kramer Endowed Science Scholarship Fund

Established by Peggy F. Kramer '45 and Walter J. Kramer**

Scholarship Requisites

Academic 3.0 GPA, Chemistry, Freshman or transfer

Demographic --

Other --

Peggy Fay Kramer '45 - "In establishing the Peggy Fay & Walter Kramer Endowed Science Scholarship Fund I

want to offer to a deserving student the opportunity I received at Webster many years ago. When graduating from Incarnate Word Academy in 1941, I never could have continued my education if I hadn't been awarded a scholarship to Webster College. The major in my Arts & Science degree in 1945 was chemistry and led to my work as an analytical chemist at Monsanto Chemical Company. Webster then and now has had a great influence on my life. The friends made through Webster remain part of my life today.

I hope the student receiving help from this scholarship will choose an area of science that will prove most interesting and exciting in a career choice and life, as well as prove beneficial to society."

Taymor & Idris Flower Endowed Scholarship Fund in Nursing

Established by Susanne M. Flower '78

Scholarship Requisites

Academic 3.0 GPA, Nursing, Undergraduate BSN

Demographic --

Other --

Susanne and Jerry Flower, and Webster University, established the Taymor and Idris Flower Endowed Scholarship in support of the BSN in the Department of Nursing, College of Arts and Sciences.

Veronica A. Deutschmann Billings Endowed Science Scholarship

Established by Anonymous

Scholarship Requisites

Academic 3.0 GPA, Chemistry, Sophomore, Junior, Senior

Demographic --

Other --

In 1942, Veronica A. Deutschmann received a full scholarship to Webster College from the Sisters of Loretto. This scholarship allowed her to go to College and graduate with an undergraduate degree in chemistry. The years at Webster were a blessing as they brought about life-long friendships and instilled a deep conviction regarding the priceless role education plays in the overall development of an individual. In a spirit of gratitude, this scholarship is

being founded to deserving students with the hope that they may complete their course of studies at Webster and make a positive contribution to society.

Will and Hellen Carpenter "Late Bloomer" Endowed Scholarship

Established by Will D. Carpenter and Hellen Carpenter

Scholarship Requisites

| | |
|--------------------|--|
| Academic | Most improved GPA soph from fresh yr, Pursuing a science degree, with a preference for biology, Undergraduate, Entering junior year, Full-time |
| Demographic | U.S. Citizen |
| Other | Military students, veterans or children of veterans |

When Freshmen arrive at Webster University to begin the great adventure of college life, there are several potential pitfalls that can cause major damage to the progress of the new student. One is having attended a high school that did not adequately prepare that person for the standards of Webster. Another potential obstacle is the very bright student who coasted through high school without having to exert much effort. Some are trapped by the inability to say "no". "No, I can't go out tonight; I have to study. No, I must finish this paper this weekend," etc.

For any one of many reasons, the first year can be a disaster. Though the student learns what is required for success by the second semester, the opportunity to demonstrate that is difficult. There is little chance to compete for scholarships and fellowships.

For this reason, we call our scholarship the "Late Bloomers" Scholarship, with the key criterion being that person who made the greatest improvement the sophomore year as compared to the freshman year. Will was a late bloomer at least three times during his academic career. The first was illness; the second was military service, and the third was changing his field of study. We hope this scholarship will help those who, for any reason, are late bloomers.

College of Humanities and Social Sciences or College of Science and Health

Class of 1959 Endowed Scholarship Fund

Established by Clare Heyne '59, Martha Armes* '59, Elena Sandoval O'Connell* '61*

Scholarship Requisites

| | |
|--------------------|---|
| Academic | 3.5 GPA |
| Demographic | Demonstrated interest in creating and promoting equal opportunities for all females |
| Other | -- |

In appreciation of the value of their educational experiences at Webster University, members of the Class of 1959 established this endowed scholarship fund to promote the study of Arts and Sciences. Annual scholarships are awarded to students in the College of Arts and Sciences at the Webster Groves, Missouri campus of Webster University.

Dr. Seena B. Kohl Memorial Endowed Scholarship

Established by The Family of Dr. Seena B. Kohl

Scholarship Requisites

| | |
|--------------------|---|
| Academic | Webster Groves, MO Main Campus |
| Demographic | -- |
| Other | Either starting or returning to college from break to care for family member, work, or other reason |

The beloved professor and cultural anthropologist joined Webster University in 1967 in the middle of the civil rights movement in the United States. She covered everything from race and gender relations to oral culture, to American frontier settlement and Native Americans. Dr. Kohl received several awards and recognitions throughout her long tenure at

Webster. She helped guide and manage countless programs as a colleague and committee member, including the Women's Studies program, the Faculty Speaker's Committee, and the internship program for Webster students at the Missouri Historical Society. In 1986, she was awarded Faculty Development Leave by Webster to spend a year as scholar-in-residence for Neshoba County, Mississippi, as part of the Mississippi Committee for the Humanities. There she studied relations among blacks, whites, and Choctaws - and encouraged them to learn their shared histories as part of a project called, "Diverse Origins, Common History." Dr. Kohl was often referred to as a trailblazer and a profound role model for a new generation of student. She not only believed in feminism and the women's movement, but she lived it. Her impact on Webster's culture and community continues to influence and inspire.

Gordon Forsyth Scholarship Fund

Established by James G. Forsyth III

Scholarship Requisites

| | |
|--------------------|---------------------------|
| Academic | 3.3 GPA, Junior or Senior |
| Demographic | -- |
| Other | -- |

Gordon Forsyth was a leader, a doer. A member of the Webster Board of Trustees, his favorite expression was, "Let's get the job done". A 1985 Board resolution reads in part: "It may be fairly said that Gordon Forsyth aimed always, in large and small things, to achieve for the University what is good and honorable. His virtues were moral, intellectual, and practical. His personal imprint will be on Webster University into the 21st century."

Paul E. Stroble, Sr. and Mildred Stroble Memorial Endowed Scholarship Fund for Transfer Students

Established by Elizabeth J. Stroble and Paul E. Stroble

Scholarship Requisites

| | |
|--------------------|--|
| Academic | 3.0 GPA, Undergraduate, Full- or Part-time |
| Demographic | -- |
| Other | Transfer student |

This endowed scholarship is established by Drs. Elizabeth and Paul Stroble in memory of Paul's parents, who spent most of their lives in the Vandalia, IL, area near St. Louis. Paul Sr. (1912-1999) was born near Vandalia, and Mildred (1919-2012) was born near Brownstown, IL. They both descended from early settlers of the Vandalia area. Paul served in World War II in the 921st Field Artillery Battalion, the 96th Infantry Division, U.S. Army. He worked as a truck driver for 40 years and as a school bus driver after retirement. Mildred was a schoolteacher while Paul served overseas, and later she worked in retail until the birth of their only child. She also worked as a tour guide at the Vandalia Statehouse State Historic Site. Both Paul and Mildred took great interest in Vandalia's history as the second capital of Illinois, where both Abraham Lincoln and Stephen Douglas launched their political careers. Not college graduates themselves, they encouraged and supported their son, Paul, as he pursued his baccalaureate and graduate education.

Webster 1970s Era Endowed Scholarship Fund

Established by Eve Coulson '73, Joseph M. Noelker '74, David Alan Boonshoft '75, Michael H. Goldberg '72, Richard H. Fox '76 and Nancy Edmonds Paull '80, and other members of the Classes of the 1970s

Scholarship Requisites

| | |
|--------------------|--|
| Academic | 3.0 GPA, Webster Groves, MO (Main), Undergraduate, Full-time |
| Demographic | -- |
| Other | -- |

Our days at Webster University were a special time in our lives. During the 1970s at Webster, we were a group of students who began to recognize the value of community, and the importance of building community. At that time the Webster Groves campus was the only campus, the student body was small, and we had the opportunity to get to know each other well. We saw community building and engagement as a way to get things done and to meet challenges locally and globally. Many of us took an awareness of the power of community into our careers. It informed our approach to shaping the workplaces we found ourselves in, or even the organizations we created from the ground up. We have been enriched and strengthened personally and professionally by friendships formed at Webster in the 1970s that have endured for decades.

The 1970's Era Alumni group (classes of 1970-1977) has established this scholarship to recognize and support future Webster students who have shown initiative, creativity and leadership in community building and engagement. We hope by example, and through this scholarship, to inspire and support like-minded students in the coming years. The Webster 1970's Era Endowed Scholarship is intended to provide annual support to undergraduate students on the Webster Groves campus who have a passion for community building and who see themselves as change agents who think about new ways to solve problems. Through this scholarship it is hoped that recipients will not only realize that their financial need is recognized, but that the intelligence, skills and vision they are bringing to Webster are valued and encouraged.

William J. Oetting Endowed Scholarship Fund

*Established by Marie Oetting**

Scholarship Requisites

| | |
|--------------------|--|
| Academic | 3.5 GPA, With participatory interest in music such as vocal, instrumental and/or composition, Soph, Jr, Sr, GRAD |
| Demographic | U.S. Citizen |
| Other | -- |

The Oetting family established this scholarship to perpetuate the memory of William Oetting, who joined the Webster University Board of Trustees in 1985, and in 1986, took a lead role in founding the Daniel Webster Society, serving on its board until his death in 1994. His commitment to Webster was honored with two flowering crabapple trees on the Priest Center grounds, with plaques reading: "Accept the labors of a faithful servant and grant him thy peace. To him is the honor and love of those who follow."

Winifred Armes Memorial Endowed Scholarship Fund

Established by Martha Armes '59*

Scholarship Requisites

| | |
|--------------------|---|
| Academic | High school GPA of 3.0 or higher, Webster Groves, MO (Main), Undergraduate, Freshman, Full-time |
| Demographic | -- |
| Other | -- |

Martha Armes '59 - "I am establishing this scholarship as a tribute to my sister, Winifred Armes (July 31, 1920 - October 24, 2001), a high school graduate who had no possibility of going to college in 1937 when she graduated from high school. Instead, she went to a business school to learn shorthand and typing to have a skill appropriate for a woman in the workplace. She fell into a job at Fort Knox, Kentucky several years before World War II where she rose quickly as a civil servant to become the secretary to the General in charge of the expansive hospital. She

retired in the 1980s, still active with the family and friends. Winnie was an avid reader of novels, histories and poetry. She carried a little notebook in which to write interesting quotes or lines of poetry. In her own way, she studied the broad interests of a liberal arts major. She was a kind, generous, faithful and beautiful sister and I hope her scholarship can fall to someone each year who will discover the rewards of the arts, literature, sciences and critical thinking."

George Herbert Walker School of Business & Technology

Anna Barbara Sakurai Memorial Endowed Scholarship Fund

Established by Carol Ann Schwab and Edward Sakurai

Scholarship Requisites

| | |
|--------------------|--|
| Academic | Mathematics & Computer Science Department, Webster Groves, MO (Main), Undergraduate, Full-time |
| Demographic | -- |
| Other | -- |

Anna Barbara's association with Webster University began in the early 1950s when, as a Sister of Loretto, she enrolled in Saturday and summer classes. In 1957 she received her Bachelor of Arts degree in Elementary Education. Anna Barbara continued her studies at Loyola University of Chicago where she received her Masters of Education in 1961. Infused through two years' further study at Brussels' famed Lumen Vitae, she returned to Webster in 1963 as a full-time instructor in the Religion Department, where she taught for nine years. When the Master of Arts in Teaching (MAT) was announced, Anna Barbara was asked to direct the program, which she did for two years. Working with famed Syracuse University mathematician Robert Davis and Webster President Jacqueline Grennan Wexler, Anna Barbara helped bring the famed "Madison Project." to St. Louis. Equally well-known M.I.T. scientist Bill Walton soon joined her in creating the MAT in Science. Additional luminaries including Jerome Bruner, Phillip Morrison

and Jerrold Zacharias further shaped the MAT. Anna Barbara also taught at the College School, which was then a part of the University's Education Department. She joined the Mathematics and Computer Science Department in 1979, where she served as chair from 1985 to 1999. Anna Barbara retired in 2010.

Many years ago Anna Barbara and Ed Sakurai initiated the St. Peter and Paul service program, serving dinner to the needy one night a month; a Webster University project that continues today under the leadership of Mary Ann Drake. In 2001, Anna Barbara received the William T. Kemper Award for Excellence in Teaching.

Colleagues say Anna Barbara was a one-of-a-kind role model for Webster faculty, staff and students. Her happiness was infectious. They say she represented the very best of Webster's ideals and mission and that caring for others was most important to her, both in and out of the classroom. Students knew she loved to help them learn and they responded with affection.

Christine Marie and Dana Charles Walker Endowed Scholarship

Established by Dana Charles Walker, DMGT '01

Scholarship Requisites

| | |
|--------------------|---|
| Academic | Undergraduate or Graduate |
| Demographic | -- |
| Other | Demonstrated financial need if awarded to undergraduate |

Christine and Dana Walker wish to assist students with financial need to advance their education. The Walkers believe that this not only grows the potential and quality of life of the individual that receives the scholarship, but also enhances the quality of life for society in general.

Donald C. Huonker Jr. & Belinda M. Huonker Endowed Scholarship Fund

Established by Donald C. Huonker Jr., MBA '00

Scholarship Requisites

| | |
|--------------------|-----------------------------------|
| Academic | 3.0 GPA, Undergraduate, Full-time |
| Demographic | -- |
| Other | -- |

Donald C. Huonker Jr. and Belinda M. Huonker Endowed Scholarship Fund is established to further the education of students in the George Herbert Walker School of Business and Technology.

Essman Family Charitable Foundation Endowed Scholarship Fund

*Established by Alyn V. Essman**

Scholarship Requisites

| | |
|--------------------|------------------------|
| Academic | 3.0 GPA, Undergraduate |
| Demographic | St. Louis resident |
| Other | -- |

The Essman Family Charitable Foundation Endowed Scholarship was established through deferred giving to promote the study of business for students who might not otherwise have such an opportunity. Through this scholarship, the Essman family hopes to share the values they acquired through a successful business career and a career of community service.

Interco Charitable Trust Endowed Scholarship Fund for Technology Students

Established by Interco Charitable Trust

Scholarship Requisites

| | |
|--------------------|---|
| Academic | Undergraduate or Graduate, Pursuing career in the field of technology |
| Demographic | -- |
| Other | -- |

Kelly C. Taylor Endowed Scholarship

Established by Barbara B. Taylor

Scholarship Requisites

| | |
|--------------------|----|
| Academic | -- |
| Demographic | -- |
| Other | -- |

Lewis E. Johnson Business and Finance Endowed Scholarship

*Established by Lewis E. Johnson**

Scholarship Requisites

| | |
|--------------------|--|
| Academic | Business or Finance, Undergraduate, Freshman or transfer |
| Demographic | U.S. or International |
| Other | -- |

I wanted to establish a fund to assist some deserving students to be able to pursue their goal of a career in Finance or Business at Webster University. I have enjoyed a great connection with Webster during 1947-1948 and throughout my married life with Jerry Maguire (Johnson) (Class of 1948) and our close relationship with her college friends.

- Lewis E. Johnson

MOHELA Endowed Scholarship Fund

Established by MOHELA

Scholarship Requisites

| | |
|--------------------|--|
| Academic | 3.0 GPA, Non-Profit Leadership Program, Graduate |
| Demographic | -- |
| Other | Final 18 hours of credit work |

MOHELA is committed to supporting the Walker School of Business & Technology's MA in Non-Profit Leadership. The goal of the Non-Profit Leadership degree is to prepare non-profit professionals to deal with the complexities and challenges of managing a non-profit organization in current and future business environments.

Marianne E. Gleich '66 & Peter A. Gleich Endowed Scholarship Fund for International Business

Established by Marianne E. Gleich '66 & Peter A. Gleich

Scholarship Requisites

| | |
|--------------------|--|
| Academic | 3.0 GPA, Management, Undergraduate, Full-time |
| Demographic | U.S. Citizen |
| Other | -- |

It has long been a goal of ours to help expand the horizons of others through education. We have been fortunate to have had many interesting and challenging experiences which are a direct result of the outstanding education we received in St. Louis. By giving back to Webster University, we are expressing our appreciation to the University for laying the groundwork for our future. It is not an exaggeration to say that without Marianne's foundation in French, our paths would have likely been entirely different. Doors opened for both of us by way of language capabilities nurtured by Webster's outstanding foreign language staff and by way of Peter's superb business background provided by another university in St. Louis. We are pleased to provide the Marianne E. Gleich '66 & Peter A. Gleich Endowed Scholarship for International Business with the hope that it will aid others in fulfilling their dreams and provide them with life changing opportunities.

- Marianne E. & Peter A. Gleich

Marianne S. Garavaglia Memorial Endowed Scholarship Fund

Established by Anthony Michael Garavaglia '94

Scholarship Requisites

| | |
|--------------------|---|
| Academic | 3.0 GPA, Webster Groves, MO (Main), Undergraduate, Full-time |
| Demographic | -- |
| Other | -- |

Anthony '94 established this scholarship because "My mother, Marianne Garavaglia, was unable to attend college because of financial reasons. When we were

growing up, she consistently told us that education was the key to everything. People could take your house, your cars, your money but nobody could ever take your education. I will never forget her commitment to obtaining a stellar education and the value she placed on doing so. When I was looking into universities, she told me that I should seriously consider Webster University because of the various programs available, the intimacy of the educational experience, and the diversity of the University. She was so proud that I was able to attend Webster and I know she would support me assisting another prospective student in attending Webster. While she did not live to see me graduate, I feel that this endowment will allow her commitment to education and to Webster to live on in her honor."

Murphy Family Endowed Scholarship Fund

Established by Toni Murphy '66

Scholarship Requisites

| | |
|--------------------|---|
| Academic | 3.0 GPA, Undergraduate, Freshman or transfer |
| Demographic | -- |
| Other | Demonstrated financial need |

I am making this donation to establish this Webster University Endowed Scholarship Fund in honor of my parents Ralph and Margaret Murphy. My parents were raised during the Great Depression when it took multiple members working to support the family unit. They valued education because they did not have the opportunity to obtain a higher education. They taught me that a good education is important to a happy and successful future. -Toni Murphy

Paric Endowed Scholarship

Established by PARIC

Scholarship Requisites

| | |
|--------------------|-----------|
| Academic | Full-time |
| Demographic | -- |
| Other | -- |

We believe the mission at Webster University, to be a worldwide institution ensuring high quality learning, is essential for developing the future of students both locally in St. Louis, Missouri and around the world. For this reason, we have chosen to create the PARIC

Endowed Scholarship at the George Herbert Walker School of Business and Technology. PARIC has been a longstanding partner of Webster University for many years, and we have personally developed many relationships along the way, making the opportunity to create the scholarship something extremely meaningful to PARIC. We hope this scholarship will not only help support the university's mission but will help to transform future students' lives so they can achieve individual excellence.

At PARIC, the promise of our brand is focused on "Building Excellence to Move Our Community Forward", and we firmly believe that through this scholarship we live up to that promise. We are honored to have the opportunity to provide additional support to students so they can attain their academic dreams without the interruption of financial need. - PARIC Corporation

S. Gay Burns-Meyers Endowed Scholarship

Established by Ms. Susan G. Burns, MBA '94

Scholarship Requisites

| | |
|--------------------|---|
| Academic | 3.5 GPA, Math or Human Resources, Undergraduate |
| Demographic | -- |
| Other | -- |

The purpose of the Susan G. Burns-Meyers Endowed Scholarship is to support the George Herbert Walker School of Business and Technology. Her motivation is to assist students with financial need to advance their education. She believes that this not only grows the potential and quality of life of the individual who receives the scholarship, but also enhances the quality of life for society in general.

Sara Govero Endowed Scholarship

Established by Sara Govero '05, MA '05

Scholarship Requisites

| | |
|--------------------|--|
| Academic | Undergraduate |
| Demographic | -- |
| Other | Demonstrated financial need, To support Webster's goal of promoting a diverse student body |

The Sara Govero Endowed Scholarship is to be awarded annually to a full-time student enrolled in the George Herbert Walker School of Business at the Webster Groves campus. The purpose of this scholarship is to provide support to undergraduate students who have financial need and to support Webster's goal of promoting a diverse student body, which is key to its educational mission.

Society for Information Management St. Louis Gateway to Innovation Endowed Scholarship Fund

Established by The Society for Information Management

Scholarship Requisites

| | |
|--------------------|---|
| Academic | 2.8 GPA, Cybersecurity |
| Demographic | -- |
| Other | Enroll as member of the Society of Information Management (SIM) |

The Society for Information Management (SIM) is a national professional network that connects senior-level IT leaders with peers in their communities. In 2006, the St. Louis Chapter of SIM founded the Gateway to Innovation Conference to foster growth in the IT industry in the St. Louis region. The annual event engages the region's IT leadership through education and networking opportunities. Through conference fees and sponsorship, Gateway to Innovation also provides support to the community in the form of scholarships.

George Herbert Walker School of Business & Technology or Leigh Gerdine College of Fine Arts

Jerry Maguire Johnson Musical Theatre or Mathematics Endowed Scholarship Fund
*Established by Lewis E. Johnson**

Scholarship Requisites

| | |
|--------------------|--|
| Academic | Webster Groves, MO Main Campus Undergraduate, Musical Theatre Performance or Mathematics |
| Demographic | -- |
| Other | -- |

Jerry Maguire Johnson relished her educational and extracurricular life while attending Webster College. She was president of the graduating class of 1948 and continued her commitment to service as an alumna at Webster, as well as to her family, parish and community. She and her husband Lew delighted in hosting many a class reunion. Being a math and French major who became a teacher, Jerry may have surprised some by her love of musical theater. She was in her element whenever she attended Broadway plays, the Muny, Stages St. Louis and any of her grandchildren's performances. Who knew she would take up tap dancing again at the age of 66!

Webster nurtured Jerry's commitment to higher education. Affording a deserving Webster University student the opportunity to fulfill a degree in mathematics or musical theater performance will continue her legacy of love for Webster University. - The Lewis E. Johnson Family

“I will be able to move forward in my art career by being able to use everything I learned to be able to navigate in the art world and business. I want to be able to create work that represents people of color, I want to be able to start different art foundations or scholarships that can give back to artist and communities, and I want to be able to make work that talks about mental health to bring more awareness.”

Zipporah Cunningham '22
 The Ron Gibbs Annual
 Webster Society Art Scholarship



Leigh Gerdine College of Fine Arts

Allen Carl Larson Endowed Scholarship Fund for Instrumental Studies at Webster University

Established by Ann Carole Gaspar, Carolyn Hewes Toft and Debra Mack Larson

Scholarship Requisites

| | |
|--------------------|---|
| Academic | 3.0 GPA, Instrumental Studies, Junior or Senior |
| Demographic | -- |
| Other | -- |

"I joined the full-time faculty of the Webster University Department of Music in 1974 shortly after Allen Larson began his tenure as conductor and director of the Webster University Symphony Orchestra. I have watched him build that orchestra over a thirty year

* Deceased

period, and observed its transformation from its early growing pains to a respected orchestra, and finally to its achieving an incredibly high level of excellence and artistry. It has provided training for a large number of advanced student musicians who have joined the ranks of professional orchestras and other music institutions nationwide, and who were worthy of playing along side some of the most gifted professional players in St. Louis.

Allen built a strong spirit of community and a splendid orchestra noted for its dedication and high artistic standards. Accompanying him in his work in administrative, public relations, and audience-building tasks was his wife and muse, Debbie Larson, where together they became a "power" couple inspiring everyone connected with the orchestra. Allen's legacy must be reinforced by investing in the future of the orchestra, and it seemed to many of us who love the orchestra and the Larsons, that an endowed scholarship for talented student instrumentalists over time would help to guarantee the continued growth and work of the next generation and success of the orchestra.

I hope that all the friends of the Webster University Symphony Orchestra, friends of the Larsons, and future Larson Scholars will actively support the new leadership of the orchestra and contribute generously to the endowment fund now established." - Carole Gaspar

Bernadette Sieving Endowed Dance Scholarship

Established by Bernadette Sieving '67, MAT '69*

Scholarship Requisites

| | |
|--------------------|-------|
| Academic | Dance |
| Demographic | -- |
| Other | -- |

Byron Grant Endowed Musical Theatre Scholarship Fund

Established by Slayden Harris, Samuel B. Clark* and Byron Grant**

Scholarship Requisites

| | |
|--------------------|--|
| Academic | 3.0 GPA, Musical Theatre, Conservatory of Theatre Arts, Junior or Senior |
| Demographic | -- |
| Other | -- |

Byron Grant served as head of the Musical Theatre Performance Program at Webster University from 1982 to 2007. Recipient of the Kemper Excellence in Education Award, Grant was an inspiration to his students and respected by colleagues both at Webster University and in theatres across the U.S. Dr. Slayden Harris established this scholarship to honor the accomplishments of Professor Grant and to advance the study of musical theatre.

Carole Gaspar Endowed Scholarship in Vocal Performance

Established by Mary Noel Prince, Dee Ann Pavelka and Peter Gaspar

Scholarship Requisites

| | |
|--------------------|--|
| Academic | 3.0 or 2.8 GPA if "particularly gifted", Vocal Performance in the Music Department, Webster Groves, MO (Main), Undergraduate, Junior or Senior and passed or expected to pass Sophomore candidacy, Full-time |
| Demographic | -- |
| Other | -- |

I joined the faculty of the Department of Music at Webster University in 1973 and during my first year there the department held a search for a new head of vocal studies. I recommended the superb singer and vocal pedagogue/historian, Carole Gaspar, after her outstanding performances as guest soloist with the Northland Symphony Orchestra of Kansas City which I conducted before coming to Webster. Her many performances with the Symphony Orchestra during my tenure there were heightened by her professional approach to quality preparation and her congenial work ethic.

Upon her being hired at Webster in 1974 I saw her develop a marvelous voice program which has turned out numerous excellent young singers who have

* Deceased

become teachers, performers and choral ensemble members throughout the United States. Indeed, some of her students have reached truly incredible heights with positions in major opera companies including The Metropolitan Opera of New York. Not many vocal programs can boast of this special achievement.

The choral program and the opera studio program at Webster have flourished because of Carole's high standards for both her students and for the voice teachers under her leadership. Carole's strict standards are well known among the ranks of Webster voice majors both past and present since over the years certain students were only allowed to graduate from Webster once they achieved senior level work.

It is fitting and right that Carole Godwin Gaspar be remembered at Webster University by the establishment of this music scholarship in her name for gifted young vocal students.- Allen Carol Larson

“I am humbled to be a recipient of The Buder Foundation Scholarship. Since I was a kid, I dreamed of not only becoming a film composer but attending Webster University to study the art of composition and to achieve that dream. Now, with your generous contribution, my family and I are able to afford my studying at Webster and for that I am grateful. I hope to set a good example not only as a student at Webster, but as an artist, which without you, I may not have had any hope of being.”

Mikaela Weston '24
The Buder Foundation
Scholarship



David Huffman Memorial Endowed Scholarship Fund

Established by Phyllis Huffman '66 and Alice Sargent*

Scholarship Requisites

| | |
|--------------------|---|
| Academic | 3.0 GPA, Theatre Arts, Conservatory of Theatre Arts, Senior |
| Demographic | -- |
| Other | -- |

David Huffman received a degree in Theatre Arts in 1967 and went on to perform on Broadway, and in television and film. He was an enthusiastic supporter of the Conservatory and the Loretto-Hilton Center until his untimely death in 1985 when he ran to assist the victims of an attempted break in and lost his life in the struggle. Family and friends, led by Alice and Peter Sargent, established this scholarship to perpetuate the memory of David.

Donald O. Davis Memorial Endowed Scholarship Fund for Jazz Studies

Established by Drew Byron Davis, MM '94

Scholarship Requisites

| | |
|--------------------|--|
| Academic | 3.0 GPA, Jazz Studies, Sophomore, Junior, Senior, Graduate |
| Demographic | -- |
| Other | -- |

The Donald O. Davis Memorial Endowed Scholarship Fund for Jazz Studies was established by Drew B. Davis and Bruce D. Davis in 1994 to perpetuate the memory of their father and to promote the study of jazz in the Department of Music in the Leigh Gerdinge College of Fine Arts.

Edward Chase Garvey Memorial Scholarship Fund

Established by Edward Chase Garvey Memorial Foundation

Scholarship Requisites

| | |
|--------------------|------------------------------|
| Academic | Conservatory of Theatre Arts |
| Demographic | -- |
| Other | -- |

* Deceased

The Edward Chase Garvey Memorial Scholarship at Webster University was created in 1980 by the Edward Chase Garvey Foundation. The Foundation was established in 1970 by Edward S. Garvey in memory of his son, an Air Force pilot killed in World War II. Each year the Garvey Memorial Scholarship is awarded to Webster University students who demonstrate outstanding ability in the Theatre Arts.

Edward M. and Philip M. Coffield Endowed Scholarship in LGCFA Sargent Conservatory

Established by Edward M. Coffield

Scholarship Requisites

| | |
|--------------------|---|
| Academic | 3.0 GPA minimum , Musical Theatre, Acting, Directing or Stage Management,Sargent Conservatory |
| Demographic | -- |
| Other | -- |

Emma Lu Middleton Endowed Sargent Conservatory Scholarship

Established by Jennifer M. Barkey

Scholarship Requisites

| | |
|--------------------|--|
| Academic | 3.0 GPA, Musical Theatre, Conservatory of Theatre Arts |
| Demographic | -- |
| Other | -- |

Gary Hubler Endowed Scholarship in Dance

Established by Gary Hubler

Scholarship Requisites

| | |
|--------------------|-----------------------------|
| Academic | 3.0 GPA, BFA in Dance |
| Demographic | -- |
| Other | Demonstrated financial need |

Gary Hubler - "It is my deepest hope that the recipients will be empowered, both personally and professionally due to their education here at Webster. An advantage of a student attending a University to continue their education in the field of Dance is to get the broader scope of the dance world present and past. When a student knows there is

financial support available for them they there is less stress focusing on their studies."

James Moroney Nigh & Judith Ponder Nigh Endowed Opera Scholarship

Established by Judith Ross Nigh, MA '88*

Scholarship Requisites

| | |
|--------------------|--|
| Academic | 2.75/3.0 GPA, Opera Studio enrollment,Junior, Senior, Graduate |
| Demographic | -- |
| Other | -- |

This scholarship was established by Judith Nigh, MA '88 to celebrate the memory of her late husband, Jim Nigh, MA '88, a respected and well-loved accountant in the Webster University finance office at the time of his death. The scholarship also recognizes Alice Nelson's work with the Webster Opera Studio and promotes opera study for young people.

Jean Sinor Memorial Endowed Scholarship Fund

*Established by Kathryn Smith Bowers**

Scholarship Requisites

| | |
|--------------------|---|
| Academic | 3.0/3.5 GPA, Choral Music Education,Junior, Senior, or Graduate student |
| Demographic | -- |
| Other | -- |

Jean Sinor graduated from Webster University in 1968 and devoted her professional career to music education. The Jean Sinor Memorial Scholarship Fund was established by Kathryn Smith Bowers in 1999 to perpetuate Sinor's memory and promote the study of music education.

* Deceased

Jeffrey Struckman Scholarship Fund

Established by Elizabeth R. Struckman and Louis Struckman

Scholarship Requisites

| | |
|--------------------|---|
| Academic | 3.0 GPA, Costume or Scene Design, Conservatory of Theatre Arts, Junior or Senior, Full-time |
| Demographic | -- |
| Other | -- |

Jeffrey Struckman '80 was a talented costume designer who left a legacy of creative work as well as memories of his warmth, humor, and positive attitude. Family and friends established The Jeffrey Struckman Memorial Endowed Scholarship to honor his memory after his death in 1995. The scholarship is awarded to a full-time third or fourth-year student majoring in theatre with an emphasis in costume or scene design.

John H. Russell Endowed Sargent Conservatory Scholarship

Established by John H. Russell

Scholarship Requisites

| | |
|--------------------|--|
| Academic | 3.0 GPA, Musical Theatre, Conservatory of Theatre Arts |
| Demographic | -- |
| Other | -- |

John and Christy Nickel Endowed Scholarship Fund

Established by John K. Nickel '75

Scholarship Requisites

| | |
|--------------------|---|
| Academic | Costume Design, Conservatory of Theatre Arts, Third or Fourth Year Student, Full-time |
| Demographic | -- |
| Other | -- |

It is because of the personal connections and the support and efforts of numerous Conservatory faculty when I attended Webster from 1971 to 1975 that Christy and I are now in the position to be able to offer support to the next generations of Conservatory Student Designers. The entire faculty in

those formative years of the Conservatory taught me much about Theater design and myself...but in particular Peter Sargent, Grady Larkins, and Larry Miller, the design faculty in the early 70's all became mentors. Christy and I hope that because of this scholarship a deserving student will have the same opportunities that we have had. - John and Christy Nickel

Judy K. Meyer Scholarship Fund

Established by the Arthur B. Meyer and Donald Strominger families

Scholarship Requisites

| | |
|--------------------|--------------------------------------|
| Academic | Conservatory of Theatre Arts, Senior |
| Demographic | -- |
| Other | -- |

This scholarship was established by the Arthur B. Meyer and Donald Strominger families in 1981, in Judy Meyer's memory. Judy was a gifted acting student at The Conservatory of Theatre Arts from 1974 to 1976. She died in 1979 at the age of 23 from cystic fibrosis. "Judy's incredible spirit was a major factor in helping us fight her disease for many years," said Dr. Strominger, who served as her physician. "It is to that spirit, as well as to her genuine talent as an actress, that this scholarship is dedicated."

Keith and Shelly Baizer "Say Yes to Art" ArtMart Scholarship

Established by Shelly and Keith Baizer

Scholarship Requisites

| | |
|--------------------|-------------|
| Academic | Art, Senior |
| Demographic | -- |
| Other | -- |

Locally owning ArtMart in St. Louis since 1952, the Baizer family has always adhered to the philosophy that good things come to those who create, and their generous support of the St. Louis art community is legendary. Keith and Shelly Baizer established The Keith and Shelly Baizer "Say Yes to Art" ArtMart Scholarship in early 2005. It is available to art students in the Leigh Gerding College of Fine Arts at Webster University.

Kevin Steincross Endowed Scholarship in Music

Established by George W. (Dub) Steincross and Joy Steincross

Scholarship Requisites

| | |
|--------------------|--|
| Academic | Music,Piano Performance or Music Education |
| Demographic | -- |
| Other | -- |

Laura Herring Endowed Sargent Conservatory Scholarship

Established by Michael Herring

Scholarship Requisites

| | |
|--------------------|--------------------------------------|
| Academic | 3.0 GPA,Conservatory of Theatre Arts |
| Demographic | -- |
| Other | -- |

Leon Hicks Endowed Scholarship Fund

Established by Nancy Kranzberg and friends and colleagues of Leon Hicks

Scholarship Requisites

| | |
|--------------------|---|
| Academic | 3.5 GPA, Art,Senior or Graduate student |
| Demographic | -- |
| Other | -- |

Leon Hicks, professor emeritus, dedicated 25 years (1974 to 1999) to teaching art students at Webster University. Friends and family established the Leon Hicks Endowed Scholarship Fund in his honor to promote the study of the visual arts.

Lynn and Thriess Britton Endowed Scholarship Fund

Established by Lynn and Thriess Britton

Scholarship Requisites

| | |
|--------------------|----------------|
| Academic | 3.0 GPA, Music |
| Demographic | -- |
| Other | -- |

Marilyn R. Fox Endowed Scholarship Fund

Established by Jeff Fox, Cheri Fox, Pamela Fox Claman, Greg Fox and Steve Fox*

Scholarship Requisites

| | |
|--------------------|--------------------------------------|
| Academic | 3.0 GPA,Conservatory of Theatre Arts |
| Demographic | -- |
| Other | -- |

The Marilyn R. Fox Scholarship was created in 2015 to support a student in the Conservatory of Theatre Arts in the Leigh Gerding College of Fine Arts. Her children shared "We, your children, have created this scholarship in honor of everything that you do for Webster University, its students, and for the Arts in St. Louis."

Marita Woodruff Endowed Scholarship Fund

Established by Marsha Mason '64

Scholarship Requisites

| | |
|--------------------|---|
| Academic | Theatre,Conservatory of Theatre Arts,Junior or Senior |
| Demographic | -- |
| Other | -- |

Actress Marsha Mason '64, established this scholarship to honor the wonderful qualities Marita Woodruff '49 shared with her students. Marita once said "Theatre is absolutely the most exciting thing in the world to participate in. It can enlighten you so much about history and what human beings are all about. You can learn so much about other cultures and other periods while you're preparing a production, and there's also a job in creating something and participating in something that affects others in the way that theatre can."

Markus and Barbara Trice Endowed Scholarship Program

Established by Markus Trice '75

Scholarship Requisites

| | |
|--------------------|---|
| Academic | Conservatory of Theatre Arts,Junior or Senior |
| Demographic | -- |
| Other | Report on mentoring activities required at year end |

* Deceased

This scholarship was established to provide both economic support to disadvantaged students in Webster University's Conservatory of Theatre Arts and to establish mentoring relationships between scholarship recipients and younger students in order to enhance the academic success and leadership potential of these students.

Mary Alice Dwyer-Dobbin Endowed Scholarship Fund in Stage Management

Established by Mary Alice Dwyer-Dobbin '63

Scholarship Requisites

Academic 3.0 GPA, Stage Management, Conservatory of Theatre Arts, Junior or Senior

Demographic --

Other --

Mary Alice Dwyer-Dobbin earned a degree in Speech and Drama from Webster in 1963. Honoring her career as a theatre stage manager and as a network television programmer for ABC, NBC, Lifetime and Proctor & Gamble, she received the Most Distinguished Alumna Award in 2001. Serving as a University Trustee, and for years hosting Conservatory students as interns on her shows in New York, Ms. Dwyer-Dobbin established The Mary Alice Dwyer-Dobbin Endowed Scholarship Fund in Stage Management.

Mary Ellen Smith Memorial Scholarship in Music

*Established by Kathryn Smith Bowers**

Scholarship Requisites

Academic 3.0 GPA, Degree in music; see agreement for full details, Full-time

Demographic --

Other Demonstrated financial need

Mary Ellen Smith was a talented singer, pianist, and organist. Growing up in Oklahoma City, she benefited from opportunities to work with several exceptional music teachers who challenged her, for example, to sing a leading role in Hansel and Gretel while still in high school. Despite the fact that her father died

while she was in high school, and her mother while she was attending Oklahoma City University, she was able to complete her bachelor's degree in voice at the University of Oklahoma and a graduate certificate in singing at Juilliard.

While studying at Juilliard, Mary Ellen returned to Oklahoma City to perform the soprano solo in Brahms' A German Requiem on December 7, 1942, to mark the one-year anniversary of the bombing of Pearl Harbor. This performance of the Oklahoma City Symphony, conducted by Lara Hoggard, was broadcast on radio throughout the state of Oklahoma.

Mary Ellen also performed in the 1943 revival of Rudolf Friml's *The Vagabond King* on Broadway.

Marriage and family in small town Kansas curtailed a promising musical career. Although only her oldest child, Kathryn Smith Bowers, a Webster University professor emerita, pursued a career in music, Mrs. Smith was happy to see all three of her children excel musically.

This scholarship is also intended to honor the admirable teaching careers of long-time Webster professors Carole Gaspar (voice), Daniel Schene (piano), and William Partridge (organ).

Miles R. Vesich '74 Memorial Endowed Scholarship in Scenic Design

Established by David P. Weiss '75

Scholarship Requisites

Academic Scenic Design, Conservatory of Theatre Arts, Junior or Senior

Demographic --

Other --

Mueller-Russell Family Endowed Sargent Conservatory Scholarship

Established by Dr. Mary Elizabeth Russell '86, MA '90

Scholarship Requisites

| | |
|--------------------|--------------------------------------|
| Academic | 3.0 GPA,Conservatory of Theatre Arts |
| Demographic | -- |
| Other | Demonstrated financial need |

This scholarship honors the parents of Douglas and Mary Elizabeth (Beth) Russell, Ph.D. who believed in a higher education experience for their children. Our lives are better because Darrell and Norma Russell and Charles and Elizabeth (Betty) Mueller gave us the love and support we needed to pursue our dreams.

Music Endowed Scholarship

Established by Anonymous Donors

Scholarship Requisites

| | |
|--------------------|--------------------------------------|
| Academic | 3.0 GPA, Music,Undergraduate |
| Demographic | U.S. citizens or permanent residents |
| Other | -- |

Nancy Scanlon Koplars Endowed Scholarship Fund

Established by Anonymous

Scholarship Requisites

| | |
|--------------------|---|
| Academic | 3.0 GPA, Musical Theatre,Conservatory of Theatre Arts |
| Demographic | -- |
| Other | -- |

We are pledging The Nancy Scanlon Koplars Endowed scholarship to the Peter E. Sargent Theater Conservatory naming fund, in recognition of our mother's love of Webster University and the professional skills that the Webster Theater Arts Conservatory has allowed her to develop. Also in celebration of the many years of service that Peter E. Sargent so freely gave to Webster University and to the St. Louis Community Performing Arts. His generosity of spirit and his gift of theater management has made, not only Webster University

a nationally known center for Drama, but his donation of time and talent to the St. Louis theater community, Opera St. Louis, The Repertory Theater, Shakespeare in the Park, and many more, demands recognition and celebration. It is an honor to recognize our mother, Nancy Scanlon Koplars, with an endowed Scholarship of Musical Theater and recognize one of her most favored teachers.

Natalie Probstein Endowed Scholarship in Art

Established by Dorte B. Probstein, MA '07

Scholarship Requisites

| | |
|--------------------|--|
| Academic | 3.0 GPA, Department of Art, Design and Art History,Undergraduate,Full-time |
| Demographic | U.S. Citizen |
| Other | Graduate of Lift For Life Academy in St. Louis, MO |

This scholarship is given by Jim and Dorte Probstein in honor of the high school graduation of their daughter, Natalie, to honor her integrity, honesty and selflessness. Natalie's graduation gift was to be a family trip anywhere in the world. Instead, it was her desire that the money that would have been spent on that trip go to charity. Natalie believes strongly that everyone should have the possibility of a good education so we have no doubt she will be happy with our choice of charity.

- Jim and Dorte Probstein

Neal Richardson Memorial Endowed Sargent Conservatory Scholarship Fund

Established by Ethan Edwards and Doris Richardson

Scholarship Requisites

| | |
|--------------------|--------------------------|
| Academic | 3.0 GPA, Musical Theatre |
| Demographic | -- |
| Other | -- |

Hugh O'Neal "Neal" Richardson found his greatest pleasure in developing musical talent in young performers. A native of Alabama, his musical skills were first developed through classical piano and music theory studies which he continued throughout his life, but his passion for teaching found fulfillment

in music direction in musical theater and coaching singers pursuing careers in that field. After extensive graduate work at Baylor University and the University of Cincinnati's College Conservatory of Music, Neal moved to St. Louis, finding employment as an accompanist for Webster Conservatory musical theater classes. His gifts naturally propelled him to ever greater responsibilities including Music Director for the department, instructor for core courses, and private coaching. His monograph "Excavating the Song" and the musical resources he shared through his website were valued by students long after they had graduated from Webster University.

He loved the challenge of preparing students for the annual musical productions, inspiring unforgettable stage performances. His reinventing of the orchestrations to correspond to the limited-sized pit orchestra was nothing short of amazing. He took delight in developing students in the art of cabaret, and he was especially

enthusiastic about preparing and playing for the annual Senior Showcase presented each spring in New York City. As significant as were his musical gifts, his greatest impact was in his selfless care for each student, welcoming and valuing each person's individuality and humanity. His students remembered him not only as a mentor but as a lifelong friend.

This scholarship seeks to support and encourage students in musical theater to achieve their greatest success as compassionate artists, skilled musicians, and brave performers.

Notion Graphic Design Endowed Scholarship

Established by Notion LLC

Scholarship Requisites

| | |
|--------------------|----------------|
| Academic | Graphic Design |
| Demographic | -- |
| Other | -- |

Peggy Fossett Endowed Scholarship Fund for Music at Webster University

Established by Peggy Viehland Fossett '66*

Scholarship Requisites

| | |
|--------------------|----------------------|
| Academic | Music, Undergraduate |
| Demographic | St. Louis resident |
| Other | -- |

The Peggy Fossett Endowed Scholarship Fund for Music at Webster University is established by the Peggy and Steve Fossett Foundation to promote the study of music to students in the Leigh Gerding College of Fine Arts.

Peter E. Sargent Endowed Lighting Design Scholarship Fund

Established by David P. Weiss '75, John K. Nickel '75, Miles Vesich '74, Carrie Houlk '74, Sam Fleming, Michael R. Moddy '77, Michele Frein '80, Mary Alice Dwyer-Dobbin '63*

Scholarship Requisites

| | |
|--------------------|---|
| Academic | 3.0 GPA, Lighting Design, Undergraduate, Conservatory of Theatre Arts |
| Demographic | -- |
| Other | -- |

The Peter E. Sargent Endowed Lighting Design Scholarship Fund is established by his many friends, especially his former students, to honor Peter Sargent's memory and promote the study of lighting design.

Peter Sargent Endowed Stage Management Scholarship

Established by Alice Sargent

Scholarship Requisites

| | |
|--------------------|--|
| Academic | Stage Management, Undergraduate, Conservatory of Theatre Arts, Junior or Senior, Full-time |
| Demographic | -- |
| Other | -- |

This scholarship was established through a gift from Peter's family: his wife, Alice, and their daughters, Amy and Megan. This scholarship is to honor Peter E. Sargent, former Dean of the Leigh Gerding College of Fine Arts and represents his outstanding passion, inspiration, dedication to craft and students, and professionalism. To be awarded to a junior or senior in Stage Management who exhibits outstanding

* Deceased

talent and the desire to pursue a career in the performing arts and who will need it to complete their education at the Conservatory.

Phyllis Huffman del Vecchio Endowed Musical Theatre Scholarship Fund

Established by Jacqueline Wexler '48, Jules A. del Vecchio and Matthew Grennan Huffman '00*

Scholarship Requisites

Academic 3.0 GPA, Musical Theatre, Conservatory of Theatre Arts, Junior or Senior

Demographic --

Other --

Phyllis Huffman del Vecchio graduated in 1966 receiving a degree in Theatre. Phyllis Huffman (professional name) was a professional casting director for feature films, television, and theatre. Notable accomplishments include serving as casting director on Clint Eastwood feature films for more than 20 years, the Hallmark Hall of Fame, mini-series including North and South, (Parts I and II) and television pilots including Murphy Brown (for which she received an Emmy Nomination), and the motion pictures Midnight In The Garden of Good and Evil, Absolute Power, and Unforgiven. She was one of the top casting directors in New York.

Robert G. Slowiak Scholarship Fund

Established by Raymond and Yvonne Slowiak*

Scholarship Requisites

Academic Theatre Arts - Design & Technical Production, Conservatory of Theatre Arts, Senior

Demographic --

Other --

The Robert G. Slowiak Memorial Scholarship Fund was established in 1985 by Yvonne and Raymond Slowiak in honor of their son, Robert, who was a student at Webster University at the time of his death. The Slowiaks wanted to keep alive his great love of theatre and scene design by creating a scholarship in his name. Each year, an outstanding senior student in the Design and Technical

Production Program is selected to receive this scholarship.

Rosemary Boehm Lough Endowed Scholarship Fund

Established by David Robert Lough and John W. Lough, Jr.

Scholarship Requisites

Academic 3.0 GPA

Demographic --

Other --

Rosemary Boehm Lough graduated from Webster College with a degree in English in 1939. Mrs. Lough taught at Nerinx Hall for many years, where she won the admiration of her students. In 1997, Jack and Lois Boehm established The Rosemary Boehm Lough Endowed Scholarship Fund in the Leigh Gerding College of Fine Arts in her memory.

Sister Eloise Jarvis, Ph.D. Endowed Scholarship in Music

Established by Steve Schenkel

Scholarship Requisites

Academic 3.0 GPA, Music or Jazz, Classical Music (odd-numbered years) and Jazz (even-numbered years), Senior

Demographic --

Other --

Sister Felicia Corrigan SL Endowed Music Scholarship

Established by Ann M. Corrigan '70

Scholarship Requisites

Academic 3.0 GPA, Music, Freshman or transfer

Demographic --

Other --

"My paternal aunt, Sister Felicia (Elizabeth) Corrigan, Sister of Loretto, was born in October 1906, the daughter and grand-daughter of Effie Anna Sikes and Bettie McMullin Sikes Matthews of Sikeston, Missouri. Each of these women, as well as my sister,

Sheila Corrigan Defazio, and I, Ann Margaret Corrigan, were educated by the Loretines in Cape Girardeau, Florissant or Webster Groves, Missouri over a period of approximately one hundred years. Sister Felicia taught Sociology at Webster College for about 25 years and had a profound influence on raising the consciousness of social justice among the sisters she taught. Her likeness appears on the bronze plaque, "Women in Education" honoring the Sisters of Loretto. The plaque is currently located on the second floor of the Emerson Library as confirmation of the high esteem in which she was and is held by her own community.

I have chosen to create Sr. Felicia's Scholarship in music at the Webster Groves campus because of my own deep appreciation for the many decades of joy both the Theatre Conservatory and the Music Department have brought to my life. I trust the students who benefit from Sr. Felicia's Scholarship to now and again 'Make a joyful noise unto the Lord' in her memory. Blessings in your studies and your lives."
- Ann Margaret Corrigan

Sister Gabriel Hoare Scholarship Fund

Established by Anonymous Donors

Scholarship Requisites

| | |
|--------------------|--|
| Academic | 3.0 GPA, Art, Art Education, Undergraduate |
| Demographic | U.S. citizens or permanent residents |
| Other | -- |

Professor Emeritus of Art, Sister Gabriel Mary Hoare, S.L. began her career at Webster University in 1963 as associate professor of art. She earned numerous degrees, including a masters in Gerontology at Webster in 1983. Her commitment to the University continues through many volunteer activities. Anonymous donors established The Sister Gabriel Hoare Scholarship Fund to honor "Sister Gabe".

Suzy Shepard Endowed Jazz Scholarship Fund

Established by Suzy Shepard

Scholarship Requisites

| | |
|--------------------|--|
| Academic | 3.0 GPA, Jazz Studio, Sophomore, Junior, or Senior |
| Demographic | U.S. Citizen |
| Other | -- |

This scholarship was established by Dr. Suzy Shepard in 1985 to promote the study of Jazz in the Department of Music. Dr. Shepard studied music at Webster University, holds a doctorate in social work and understands the value of music as therapy. It was her great love for music that inspired Dr. Shepard to create the jazz scholarship fund.

TKT Scholarship Fund

Established by Phillip Cappello, Rosalie Saputo, Anthony T. Saputo and Lon W. Jackson**

Scholarship Requisites

| | |
|--------------------|----------------------------------|
| Academic | 3.0 GPA, Music, Junior or Senior |
| Demographic | -- |
| Other | -- |

The TKT Endowed Scholarship Fund is established by family and friends to honor the memory of Terry Jackson, Kirk Cappello, and Tony Saputo. These young men believed that if energy is channeled in a positive direction, then success is possible. They worked hard to hone their craft. The donors hope that the scholarship will communicate and perpetuate this spirit through the young people who benefit from it.

Theatre Arts Endowed Scholarship

Established by Anonymous Donors

Scholarship Requisites

| | |
|--------------------|--|
| Academic | 3.0 GPA, Theatre Arts, Undergraduate, Conservatory of Theatre Arts |
| Demographic | -- |
| Other | -- |

* Deceased

Thomas Carter Flueckiger Memorial Endowed Scholarship Fund

*Established by Michael T. Nevens, Bryan E. Flueckiger
and Mary Ann Flueckiger*

Scholarship Requisites

Academic 3.0 GPA, Lighting
Design, Conservatory of Theatre
Arts, Junior or Senior

Demographic --

Other --

Thomas Carter Flueckiger was born on April 24, 1992. From infancy on Thomas was always fully engaged with life. As a toddler he was curious as to how everything worked. After playing with a toy once the way it was intended, Thomas would then try to figure out what else he could do with it. Thomas was very verbal as a child with an adult-like vocabulary. He loved talking with adults and was never at a loss for questions.

In fourth grade, Thomas discovered the theatre and found his calling in life. In middle school he started learning the ropes for light and sound work. By eighth grade, Carter (as he was known to family and friends) was branching out into community theatre and also crewing for the Fort Wayne Ballet Company, and by his Freshman year of high school Thomas knew he wanted a career in theatre and concert lighting. Thomas even designed and taught a tech class for middle school students. During his senior year of high school, Thomas was personally asked by the director to be the stage manager for the Civic Theatre's production of "Working." The Theatre's director said that was the first time he had ever handed over the keys of the building to a 17-year-old.

In addition to high school productions, he frequently worked with the Fort Wayne Civic Theatre and also the Ballet. Even with all his free time being spent in the theatres he loved so much, Carter maintained a GPA above 4.0 all through high school and graduated 4th in his class. He received one of the highest honors bestowed by Canterbury High School, the Canterbury Cup, upon graduation.

When looking at college theatre programs, Thomas knew exactly what he wanted. He chose Webster

because of the people he met in the program and the opportunity for immediate hands-on experience.

Life at Webster in the Conservatory program was everything Thomas hoped for. He made friendships which were destined to last for life. He loved his peers, the faculty, and the experiences in theatre. He knew he was receiving the foundation which would allow him to achieve his highest goals.

On March 28, 2011, Thomas' life was cut short by cancer. His sister, parents, family, many friends, and the theatre community have lost a wonderful, caring, vibrant young man. To honor his memory and further the study of lighting design, we have established this scholarship so that others can continue his dreams.

Timothy Scott Barker Endowed Cincinnati SCPA Scholarship

Established by Timothy Scott Barker '90

Scholarship Requisites

Academic Acting or Musical
Theatre, Undergraduate, Conservatory
of Theatre Arts, Freshman

Demographic U.S. Citizen

Other Preferably a graduate of the SCPA in
Cincinnati

This scholarship was established through a gift from Tim Barker, an alumnus of the School for Creative and Performing Arts in Cincinnati, Ohio (SCPA-'86) and The Conservatory of Theatre Arts at Webster University ('90). This scholarship represents an outstanding balance of passion, inspiration, dedication to craft and professionalism. To be awarded to an incoming freshman in Acting or Musical Theatre exhibiting outstanding talent and the desire to pursue a career in performing arts.

Walter Bowers Memorial Endowed Scholarship in Music Education at Webster University

*Established by Kathryn Smith Bowers**

Scholarship Requisites

Academic 3.0 GPA, Music Education,
Instrumental
emphasis, Undergraduate or

| | |
|--------------------|---|
| | Graduate, Junior, Senior, or Graduate student |
| Demographic | U.S. Citizen |
| Other | -- |

We are establishing this scholarship fund to honor the 30+ year teaching career of Walter Bowers. This scholarship will benefit outstanding instrumental music education students at Webster who intend to pursue a career as public school instrumental music educators.

Walter Bowers taught instrumental music in elementary schools in northern Indiana and was bandmaster at Mishawaka High School (near South Bend) for many years. Mr. "B" conducted the concert bands, "big bands," and other small instrumental ensembles. The musical experiences that members of the band had were an integral part of their early education and served them well in collegiate experiences either in music or in various other fields of study. With these experiences in mind, our desire is to provide an opportunity for Webster instrumentalists to thrive and excel with a little help from their friends - Mr. "B" and us!

- Dave and Kathy Bowers

Wells Hobler Family Endowed Scholarship in Dance

*Established by Jean Hobler**

Scholarship Requisites

| | |
|--------------------|----------------------------------|
| Academic | 3.0 GPA, Dance, Junior or Senior |
| Demographic | -- |
| Other | -- |

Willie Akins Memorial Endowed Scholarship Fund

Established by Joe M. Mancuso '90

Scholarship Requisites

| | |
|--------------------|---|
| Academic | Jazz Studies, Jazz Performance or Music Education with Jazz emphasis, Undergraduate or Graduate |
| Demographic | -- |
| Other | -- |

The main purpose of this scholarship is two-fold. First and foremost, to promote the education of the American art form we call Jazz. I feel that we need more young musicians to pursue this music in order to keep it alive. I will spend the rest of my life creating projects to make the music thrive again and dare I say, popular again, but first we must sustain its existence.

Secondly, the purpose of this scholarship is to pay homage to a man who spent much of his life teaching this art form both in the classroom and in the clubs to countless youngsters. Willie sacrificed his own career to come home from New York after his father passed to take care of his mother. The side effect of this change in his life turned out to become one of, if not the most enriching rewards to the jazz scene in St. Louis ... to its fans, universities and its young players. Willie always surrounded himself with young jazz musicians, many of which that have gone on to have big careers like the one Willie gave up. We need to keep his memory alive forever in St. Louis.

As a young, Webster University student, I had the honor of watching Willie perform in clubs around town, and as a professional singer I had the honor of sharing the stage with him in his later years and to call him my friend; and now it is my greatest honor to organize this scholarship in his name.

I believe that Willie Akins was the best thing to ever happen to jazz in St. Louis. - Joe Mancuso, 2017

School of Communications

“

“Undeniably, the media plays a very influential role in our modern world. Being a part of the advertising and marketing field, I believe it is my responsibility to become an agent of change. A single voice delivered through the media can have a huge impact on thousands of people very rapidly. My goal is to improve the lack of diversity and representation that is needed, as well as inspiring others to do the same. I am certain that my Webster degree will be one of the key enablers to succeed in this journey.”

”



Camilla Angulo-Guero '23
The Raymond J. Smith
Scholarship

Andrew Robert Schreiber Memorial Endowed Scholarship Fund

*Established by Friends and Family of Andrew
Schreiber '13*

Scholarship Requisites

| | |
|--------------------|--------------------|
| Academic | 3.0 GPA, Animation |
| Demographic | -- |
| Other | -- |

Our son Andrew was a 2013 graduate of Webster University in the School of Communications. His specific major was Animation, for which he possessed both an exceptional talent and enthusiastic passion. He loved his time there and excelled under the

outstanding direction of the faculty and staff. Upon graduation, he was fortunate to secure an occupation as a synthetic environment designer where he was able to apply his skills learned at Webster. Aside from his interest in animation and his technical abilities, Andrew was best known for his kind, generous and helpful nature toward all who knew him. His sense of humor and wry smile were infectious. Andrew left us all too soon at the age of 27. Though we will no longer continue to benefit from his gifts, talents and charm, he would be so pleased to know that this scholarship will forever offer future students an opportunity to achieve their dreams, just as he did.

-Jack and Sherry Schreiber, 2015

Bette Jane Wolff Schreiber Memorial Endowed Scholarship Fund

Established by Jack Schreiber

Scholarship Requisites

| | |
|--------------------|--|
| Academic | 3.0 GPA, Webster Groves, MO (Main), Undergraduate, Freshman or transfer, Full-time |
| Demographic | -- |
| Other | Demonstrated financial need |

Our Mother was a 1947 graduate of what was then Webster College, an all-women's school administered and taught by the Sisters of Loretto. In addition to her husband of 60 years, as well as her children, grandchildren and great grandchildren, Mom had a lifelong love affair with the school. It was where she made and enjoyed very close and enduring friendships; so much so, growing up, we thought many of her classmates were our aunts and we addressed them as such. It was not unusual for her class to hold annual reunions and Mom remained an active member of the alumni association for more than 65 years. She was very proud to be a member of the Golden Circle Club and was always interested and excited to watch as her alma mater grew and prospered into a global university.

In addition to her enduring friendships, Mom was always most grateful for the education she received at Webster and for the reinforcement of the moral and ethical values it instilled. These were values she

passed on to all of us, her children, and to those students she educated during her long career as a teacher. She was very pleased that two of her grandsons were Webster University graduates, both from the School of Communications. At the age of 88, she was present at graduation to watch as one of them received his diploma.

For the encouragement and support of future generations of students pursuing academic achievement and principled guidance, this scholarship is established as a lasting tribute to her memory. - The Schreiber Family

Doris and Earl Federhofer Endowed Scholarship in the School of Communications

Established by Doris '38 and Earl Federhofer*, and Sons*

Scholarship Requisites

| | |
|--------------------|----|
| Academic | -- |
| Demographic | -- |
| Other | -- |

Elva Norman/Women in Communications Memorial Scholarship

Established by Debra A. Carpenter and Katherine S. Jenkins

Scholarship Requisites

| | |
|--------------------|---|
| Academic | Junior or Senior |
| Demographic | Demonstrated interest in creating and promoting equal opportunities for all females |
| Other | -- |

Elva Norman was a founding member and past president of Women in Communications, a national organization of professional women that was established in 1939. To honor her memory, The Elva Norman Women in Communications Memorial Endowed Scholarship was created in 1996 to benefit students whose educations have been interrupted and who are enrolled in the School of Communications in their junior or senior year.

Helen Cleary Hufker Memorial Scholarship Fund for School of Communications

Established by Barry E. Hufker, MA '93

Scholarship Requisites

| | |
|--------------------|---|
| Academic | 3.0 GPA, Audio Production |
| Demographic | Demonstrated interest in creating and promoting equal opportunities for all females |
| Other | Demonstrated financial need |

Helen Cleary Hufker was a believer in the value of education and made every effort for her children to have the best she and my father, Eugene, could afford. She supported our ambitions, especially mine in music and audio. Her encouragement in music and science led me to a career in audio production and education. From our earliest years my mother taught us the importance of equal opportunities for women. This scholarship is an effort to make her ideals a reality for women in the audio industry.

-Barry Hufker

Jack Galmiche Memorial Endowed Scholarship

Established by Lynn Britton, Amy Shaw, Amelia Bond and friends

Scholarship Requisites

| | |
|--------------------|--|
| Academic | -- |
| Demographic | -- |
| Other | Serving an internship at Nine Network or other non-profit, public service oriented comm or media org |

John "Jack" Galmiche III served as President and Chief Executive Officer of the Nine Network of Public Media from 2006 until his death on April 16, 2019. A native St. Louisan, he committed himself to community engagement and served on the Webster University Board of Trustees beginning in 2014. Other involvements include serving on the boards of Public Television Association of Missouri, Grand Center, Inc., the St. Louis Regional Chamber, the Public Broadcasting Service, American Public Television, Public Television Major Market Group, Public

* Deceased

Television Affinity Group Coalition, National Education Telecommunication Association, Integrated Media Association, and the Northwest News Network.

James H. Wilson II Endowed Memorial Scholarship Fund

Established by Deborah B. Barber, Kevin M. Grile, Scott T. Weidman, Evelyn H. Wilson, and Althea Pryor**

Scholarship Requisites

| | |
|--------------------|---------------------------|
| Academic | Undergraduate or Graduate |
| Demographic | -- |
| Other | -- |

Friends of Jim Wilson established the James H. Wilson II Endowed Memorial Scholarship Fund to perpetuate his memory and commemorate his years of service to television and print journalism in St. Louis. The scholarship also honors Wilson's love of film and education.

Koplar Communications/Howard Stevens Memorial Endowed Scholarship Fund

*Established by Edward J. Koplar**

Scholarship Requisites

| | |
|--------------------|--|
| Academic | 3.5 GPA, Media Communications, Undergraduate |
| Demographic | -- |
| Other | -- |

Ted Koplar and Koplar Communications established the Koplar Communications/Howard Stevens Memorial Endowed Scholarship Fund in 1999 to perpetuate Howard Stevens' memory and promote the study of media and communications in the School of Communications.

Michael B. Bingman Memorial Endowed Scholarship Fund

Established by Dr. Joseph F. Olszewski, MA '76*

Scholarship Requisites

| | |
|--------------------|---|
| Academic | 3.0 GPA, Media Communications, Graduate |
| Demographic | -- |
| Other | -- |

The Michael B. Bingman Memorial Endowed Scholarship Fund was established by Dr. Joseph F. Olszewski to perpetuate the memory of his friend and promote the study of Media Communications.

Nancy Anne Underwood Scholarship Fund

Established by David Don Underwood '88

Scholarship Requisites

| | |
|--------------------|--|
| Academic | 3.4 GPA, Photography, Junior or Senior |
| Demographic | -- |
| Other | -- |

Nancy Anne Underwood graduated from Webster University's School of Communications in 1990. In 1993 her growing career in photography ended when she was tragically killed in a car accident. Her husband, David Underwood '88, established The Nancy Anne Underwood Scholarship Fund to honor her memory. The scholarship is awarded to junior or senior undergraduate students majoring in photography.

Unbridled Media Endowed Scholarship Fund

Established by Unbridled Media

Scholarship Requisites

| | |
|--------------------|----|
| Academic | -- |
| Demographic | -- |
| Other | -- |

School of Education

Adelaide G. Heverly Welge Endowed Scholarship Fund 2

Established by Isobel H. Mack

Scholarship Requisites

| | |
|--------------------|--|
| Academic | Math Education preferred, Junior or Senior |
| Demographic | Commuter, Resident of South St. Louis |
| Other | -- |

* Deceased

When Adelaide G. Heverly Welge graduated from Altoona (PA) High School in 1915, her principal encouraged her to advance her education and helped her secure a scholarship to the University of Pittsburgh. Mrs. Welge died in 1996 at the age of 100, leaving a legacy of educational endowments in both Altoona and St. Louis. Her nephew, Donald Mack, with help from Mrs. Welge's estate, established two scholarship funds at Webster University, one in math and the other in English, for commuter students in St. Louis.

Beatrice & David Kornblum Institute for Teaching Excellence

*Established by Beatrice Kornblum**

Scholarship Requisites

| | |
|--------------------|--|
| Academic | Graduate |
| Demographic | -- |
| Other | Teaching Institute programs, scholarship |

The Beatrice and David Kornblum Institute for Teaching Excellence under the aegis of Webster University provides a distinctive forum to carry out the mandates for excellence in education that were embraced by Beatrice Kornblum in her career as a teacher and will ensure her legacy to education of the future through her founding contribution. The Institute supports innovative education, program development, community service and improved teaching and learning with emphasis on those from a disadvantaged public school in an urban setting. The program supports long-term professional development and collaborative work among teachers and educational leaders working together in teams to improve teaching and learning in schools. These teams work with Webster University faculty in collaborative action research projects and become mentors for future Kornblum Scholars. The long-term goal is to provide a lasting network of support for teachers and educational leaders who engage in action research and reflective practice aimed at improving teaching and learning for children who are considered at risk.

Brenda and Terrence Fyfe Endowed Scholarship

Established by Brenda and Terrence Fyfe

Scholarship Requisites

| | |
|--------------------|-----------------------------|
| Academic | 3.0 GPA, Graduate |
| Demographic | -- |
| Other | Demonstrated financial need |

Throughout my 35-year tenure at Webster University as a professor of education and then Dean of the School of Education, I supported the values of diversity and inclusion which are cornerstones of Webster University's mission and vision. I did this by encouraging and collaborating with fellow faculty to develop programs, courses, and field experiences that cultivate in our candidates a respect for diversity through responsive teaching and learning that values differences.

I worked with colleagues within the School of Education and across the university to recruit a population of faculty, staff, and students from diverse backgrounds, so that all of us might benefit from daily opportunities to listen and learn from a rich diversity of perspectives. By endowing a scholarship intended to increase the diversity of students in the School of Education. My husband and I hope to leave a small legacy of perpetual support for educators who can contribute to goals of justice and equity for all learners. -Brenda Fyfe

Catherine Broden Marek Endowed Scholarship

Established by Catherine Broden Marek '71

Scholarship Requisites

| | |
|--------------------|---|
| Academic | 3.0 GPA, Webster Groves, MO Main Campus, Undergraduate |
| Demographic | -- |
| Other | -- |

I dedicate this scholarship to the women in my life who inspired in me a love and respect for the value of education. My maternal grandmother, my mother and my aunt dedicated their lives to ensuring their loved ones received the very best education available and were able to access all of the opportunities that would allow them to reach their dreams and potential.

* Deceased

The mantra of these women regarding education was, "Educational success depends on you and your ability to find the resources to help you achieve it." I can hear their voices in my young ears telling me to give school my very best effort, but to also find the help available to overcome any roadblocks or difficulties I had along the way. I was fortunate to have the financial resources of my family to pay for my own and my children's educations. However, being fully aware that financial difficulties are one of the major roadblocks to accessing quality education, I would like to provide this scholarship to less fortunate students who want to dedicate their lives to the education of others.

Earl and Myrtle Walker Endowed Scholarship for the Practical Support of Student Teachers

Established by Earl E. Walker

Scholarship Requisites

| | |
|--------------------|--|
| Academic | Undergraduate |
| Demographic | -- |
| Other | Student teachers, Teaching in STL Public Schools, Also participating in tutoring students (not restricted to where tutoring takes place) |

This scholarship benefits those working in public schools in the St. Louis area. Student teachers often find it appealing to stay after class to help teachers and children. Some volunteer to stay, but most must leave the school for part time paying jobs. This fund serves to provide stipends for student teachers who

work as teacher aides or tutors in the same school where they are involved in course experiences.

Edward L. Glotzbach Scholarship Fund

Established by Edward L. Glotzbach

Scholarship Requisites

| | |
|--------------------|----------------------------------|
| Academic | Educational Technology, Graduate |
| Demographic | -- |
| Other | -- |

Former Chair of Webster University's Board of Trustees, Edward L. Glotzbach spent his professional career in the communications technology field. Ed joined Southwestern Bell Telephone (SWBT) in 1970 and advanced with SWBT, AT&T, and Bellcore. Ed served as Executive Vice President and Chief Information Officer for SBC Communications, Inc. and as Vice Chairman of Information Services Group. Upon his retirement, the SBC Foundation established The Edward L. Glotzbach Scholarship in his honor.

Jane Krause Educational Scholarship for Undergraduate students who plan to teach K-12 math

Established by Jane Krause, MAT '70

Scholarship Requisites

| | |
|--------------------|--|
| Academic | Undergraduate, Plan to teach K-12 math |
| Demographic | -- |
| Other | -- |

Marilynne Bradley Endowed Scholarship Fund for Art Education

Established by Marilynne G. Bradley, MAT '75

Scholarship Requisites

| | |
|--------------------|--|
| Academic | 3.0 GPA, Art Education, Webster Groves, Undergraduate, Full-time |
| Demographic | -- |
| Other | -- |

Webster University has served as an important part of my life as an alumna, a volunteer and board member, a parent, and as an adjunct professor teaching in the School of Education for 18 years.

As an artist and the longtime art instructor at Webster Groves High School, communicating with students and opening the world to them through art was my passion.

I have established The Marilynne Bradley Endowed Scholarship Fund for Art Education to help expand the horizons of students who wish to continue the important work of teaching art to a new generation of students.

My hope is that one day the students who benefit from this award will in turn try to help those who come after them by supporting the institution with their own scholarship. - Marilynne Bradley

Marlene Birkman Endowed Scholarship Fund

Established by Mary Strauss

Scholarship Requisites

| | |
|--------------------|--|
| Academic | Graduate, Student interested in teaching English |
| Demographic | -- |
| Other | -- |

Thomas A. Kooyumjian Family Foundation Endowed Scholarship

Established by The Thomas A. Kooyumjian Family Foundation

Scholarship Requisites

| | |
|--------------------|---|
| Academic | Special Education, Undergraduate, Full-Time Student |
| Demographic | Missouri resident |
| Other | -- |

The Thomas A. Kooyumjian Family Foundation developed this endowed fund which will serve Webster University students for years to come. This scholarship was created to honor the legacy of Thomas A. Kooyumjian and his commitment to education. It was also established to acknowledge the legacy of Webster University graduates from the Kooyumjian Family. It is our hope that this scholarship will benefit students in need and assist in their pursuit of academic excellence.

“With my elementary education degree and certification, I hope to inspire a wide variety of students, both inside and outside of the classroom. Having an impactful learning experience is an integral part of every student’s life, and I want to take part in this change. ‘A teacher takes a hand, opens a mind, touches a heart, and shapes the future’.
- Unknown.”

Peter Nguyen '22
The Jim and Ruth Ann Yorg Annual Education Scholarship and The Brenda & Terrence Fyfe Endowed Education Scholarship



Study Abroad

Dr. Neil J. George Endowed International Study Scholarship Fund

Established by Neil George Jr., MBA '89

Scholarship Requisites

| | |
|--------------------|---------------------------|
| Academic | Undergraduate or Graduate |
| Demographic | -- |
| Other | -- |

Dr. Neil George joined the faculty of Webster University in 1972 and was named chair of the history/political science department in 1975. He has served in many capacities since then, including Executive Vice President, Vice President/Academic Affairs, President and Chancellor. The Dr. Neil J. George Endowed International Study Scholarship was

* Deceased

established to honor Dr. George and to promote international study abroad by students of Webster University.

Dr. Roy Tamashiro Endowed Travel Scholarship Fund

Established by Dr. Roy Tamashiro

Scholarship Requisites

| | |
|--------------------|---|
| Academic | Sophomore, Junior, Senior or Graduate |
| Demographic | -- |
| Other | Supplement costs of tuition and fees associated with international studies, Students must submit reflective essay |

Like no other time in history, we know and experience our interconnectedness and interdependence with everyone and everything on planet Earth. The ability to cross borders, the advancements in technology, and the information revolution make us aware that all human beings, all living things, and all natural and physical processes on the planet are systemically related. In this context Webster University recognizes its vital role in preparing students, educators, and future leaders for living and working in globally interconnected societies and has adopted a mission to "transform students for global citizenship."

Dr. Roy Tamashiro shares "As a third-generation Asian-American whose grandparents emigrated from Okinawa, growing up in the international crossroads of the Hawaiian Islands, I personally resonate with the aim to encourage students to become global citizens."

Leif J. Sverdrup Fund for International Study

Established by Mrs. Leif J. Sverdrup and Mr. Johan Sverdrup**

Scholarship Requisites

| | |
|--------------------|--|
| Academic | 3.3 GPA, Junior or Senior |
| Demographic | -- |
| Other | 50% to be awarded as student scholarships and 50% for faculty travel |

Marianne E. & Peter A. Gleich Endowed Scholarship Fund for Undergraduate Study Abroad Opportunities

Established by Marianne E. Gleich '66 and Peter A. Gleich

Scholarship Requisites

| | |
|--------------------|---|
| Academic | 3.0 GPA, Undergraduate, Full-time |
| Demographic | U.S. Citizen |
| Other | Demonstrated financial need, Traditional Student, Cost of housing at any Webster international campus, may not exceed 75% of housing for semester |

Marianne E. Gleich, BA '66 and Peter A. Gleich have a sincere interest in broadening the opportunity for study abroad experiences for undergraduate students at Webster University. Their commitment to Webster is laudable and the University truly appreciates their advancing dedication in supporting our mission, first through academic scholarships and now by expanding the availability of transformational opportunities within our study abroad program.

Yakko and Richard S. Meyers Japan-United States Study Endowed Student Scholarship

Established by Yakko and Richard S. Meyers

Scholarship Requisites

| | |
|--------------------|---|
| Academic | Undergraduate or Graduate, Study abroad |
| Demographic | U.S. or Japanese Citizen |
| Other | -- |

Serving as president of Webster University from 1994-2008, Richard Meyers and his wife, Yakko, met in Japan and share a passion for the country and its culture. This scholarship was established to encourage the opportunity to experience the richness of the American and Japanese cultures by enabling U.S. citizens at Webster to study at an accredited university in Japan and/or Japanese citizens enrolled in an accredited university in Japan to study at Webster University in the United States.

* Deceased

Marilynne Bradley Endowed Fund for Undergraduate Study Abroad

Established by Marilynne G. Bradley, MAT '75

Scholarship Requisites

| | |
|--------------------|---|
| Academic | Webster Groves, MO (Main), Undergraduate |
| Demographic | -- |
| Other | -- |

Webster University has served as an important part of my life as an alumna, a volunteer and board member, a parent, and as an adjunct professor teaching in the School of Education for 17 years.

As an artist and a longtime art instructor at Webster Groves High School and Webster University, communicating with students and opening the world to them through my travels was my enjoyment. Traveling around the world has raised my consciousness of similarities in artistic creativity in all continents. Customs and lifestyles influence various art media and by offering an incentive to travel, I hope to motivate students to continue my interest in world cultures and their commonality.

I have established The Marilynne Bradley Endowed Fund for Undergraduate Study Abroad to help expand the horizons of students who wish to visit other countries in a cross-cultural journey and observe different ways of living and incorporate diversity and multicultural ideas into their lives. This travel will cultivate thoughtful, effective leaders in our expanding international world.

This scholarship gives the student a chance to travel and explore the traditions of diverse cultures throughout the world and learn how they are tied together by common themes.

My hope is that one day the students who benefit from this award will in turn try to help those who come after them by supporting the institution with their own scholarship. Safe travels! - Marilynne Bradley

Webster Society Annual Scholarships

The Webster Society (WS) Annual Scholarship program provides financial support for Webster University students through individual donors who are interested in assisting talented students. Annual scholarships begin at the \$1,500 level, are available for awarding in the academic year following the gift, and may be designated to students in any of Webster's colleges and schools. A donor may renew an annual WS scholarship each academic year.

University-wide Scholarships

Vincent C. Flewellen Webster Society Annual Scholarship

Established by Vincent C. Flewellen

College of Humanities and Social Sciences

Burke Family Scholarship

Established by Mary '68 and Michael Burke

Jeanelle and Mark Wiley Scholarship

Established by Jeanelle J. Wiley, MA '14

Joy K. Miltenberger Webster Society Annual Scholarship

Established by Joy K. Miltenberger, MA '93

Louise Cougill Williams Annual Scholarship for History and Political Science Students

Established by Dr. Gwyneth I. Williams

Pat Burnes Webster Society Annual Scholarship in College of Humanities and Social Sciences

Established by Pat Burnes '64

College of Science and Health

Jeremiah Jefferies Webster Society Annual Scholarship

Established by Molly A. Stehn

George Herbert Walker School of Business & Technology

"I am very honored and thankful to you for selecting me for The Gregory & Dr. Vanessa Davis Annual Scholarship. My parents have worked very hard for me to attend college and get a degree so this scholarship will help achieve this dream of becoming a software engineer. Thank you for your kindness and generosity and I will continue to work hard at Webster to achieve my future goals."

Noah Thomas '24

The Gregory & Dr. Vanessa Davis
Annual Scholarship and Paric
Endowed Scholarship



Ashworth Family Annual Scholarship

Established by Brian D. Ashworth, MBA '00

Fischer-Bauer-Knirps Scholarship in honor of Katherine Gebhard

Established by Fischer-Bauer-Knirps Foundation

**Gregory and Dr. Vanessa Davis
Scholarship**

Established by Dr. Vanessa, MA '04, DM '15 and Mr. Greg Davis

**Jason and Dana Gilliam Webster Society
Annual Scholarship**

Established by Jason Gilliam, MHA '12

McCuien Family Scholarship

Established by Alexandria McCuien '11, MBA '15, MS '18

**Patricia and James Cook Annual
Scholarship**

Established by Patricia F. Cook, MA '78 and James Cook

Patricia and Joseph Kapsar Scholarship

Established by Patricia P. Kapsar '85, MBA '88

**Tom & Martha Palmer Webster Society
Annual Scholarship in Business in the
Walker School of Business**

Established by Julie "JP" Palmer

**Tom & Martha Palmer Webster Society
Annual Scholarship in Management in
the Walker School of Bus**

Established by Julie "JP" Palmer

**Tom & Martha Palmer Webster Society
Annual Scholarship in Math &
Computer Science in the Walker Scho**

Established by Julie "JP" Palmer

**V. Diane McGee Webster Society
Annual Scholarship in the GHWSBT**

Established by V. Diane McGee, MBA '98

Leigh Gerdine College of Fine Arts

**Artists of Color Collective Our Own
Heroes Scholarship**

Established by Tony Merritt, II

**Bradley N. Loudenback Annual
Scholarship for Drawing Students**

Established by Dr. Gwyneth I. Williams

Burstein Family Scholarship Fund

Established by the Burstein Family

**Christine Brewer Annual Scholarship in
Vocal Music Performance**

Established by Christine Brewer

**Claudia Burris Webster Society
Scholarship**

Established by Claudia R. Burris, MAT '99

**David Hults and Brad Fuller Webster
Society Annual Scholarship for Art in
the LGCFA**

Established by David W. Hults '93 and Brad Fuller

**Dorothy & Matthew Englis Annual
Theater Scholarship**

Established by Dottie Marshall Englis

**Edward M. and Philip M. Coffield
Webster Society Annual Scholarship for
Stage Management in LGCFA**

Established by Edward M. Coffield

**Gary R. Wilson Annual Scholarship for
Dance**

Established by Gary R. Wilson, MA '75

Gerald R. Murphy Memorial Scholarship

Established by John E. Fannon '79

**Jerome Jaymes Lowe Memorial
Scholarship**

Established by Allison Kinney '11

**Jerry Mitchell Annual Scholarship in
Musical Theatre**

Established by Jerry Mitchell

**Kristin Johnson Diversity in Dance
Annual Scholarship**

Established by Kristin Johnson, MA '01

**Matchbox Design Group Webster
Society Annual Scholarship in Leigh
Gerdine College of Fine Arts**

Established by Matchbox Design Group

**Mosbacher Webster Society Annual
Scholarship in Sargent Conservatory of
Theatre Arts**

Established by Merry and Jim Mosbacher

**Notion Webster Society Annual
Scholarship in LGCFA**

Established by Notion LLC

**Paul Steger and Sara Bucy Webster
Society LGCFA Annual Scholarship**

Established by Paul Steger and Sara Bucy

**Rocky Carroll & Gabrielle Bullock
Annual Acting Scholarship**

Established by Rocky Carroll '85 and Gabrielle Bullock

**Rocky Carroll & Gabrielle Bullock
Annual Musical Theatre Scholarship**

Established by Rocky Carroll '85 and Gabrielle Bullock

**Tyler P. Olsen & Christopher Brenner
Webster Society Annual Scholarship in
Dance**

Established by Tyler P. Olsen and Chris Brenner

**Walter D. Edwards Webster Society
Annual Scholarship in Sargent
Conservatory**

Established by Walter D. Edwards

**Webster Society Annual Scholarship in
Musical Theatre**

Established by Anonymous

School of Communications

**Amanda Gioia Webster Society Annual
Scholarships in the School of
Communications**

Established by Amanda K. Gioia, MA '97

**Dave and Agnes Garino Webster Society
Annual Scholarship in the School of
Communications**

Established by Dave and Agnes Garino

Jack Galmiche Annual Scholarship

Established by friends of Jack Galmiche

**Nine PBS Webster Society Annual
Communications Scholarship**

Established by Nine PBS

Raymond J. Smith Scholarship

Established by Paradowski Creative

School of Education

**Doug and Mary Chomeau Annual
Scholarship**

Established by Doug and Mary Chomeau

**Karen Dapron Webster Society Annual
Scholarship**

Established by Karen P. Dapron, MAT '78

**Wednesday Club Scholarship in the
School of Education**

Established by Wednesday Club of St. Louis

Annual Scholarships

Grants from corporations, foundations, and community organizations have long been an important source of annual scholarships for Webster students.

Borealis Social Scholarship and Excellence Awards

Established by Borealis Social Fund

Dr. Donald M. Suggs Scholarship

Established by Webster University in honor of Dr. Donald M. Suggs

Niel DeVasto Scholarship

Established by St. Louis Community Foundation upon the recommendation of an anonymous advisor

Sam and Marilyn Fox Foundation Scholarship Fund

Established by Sam and Marilyn Fox Foundation

Webster Heartland Community Promise Scholarship

Established by Mr. Charles Stucke and Mrs. Kaisa L. Stucke

Shirley Bradley Price LeFlore Annual Scholarship

Established by Lyah B. LeFlore-Ituen and the Shirley Bradley LeFlore Foundation

Buder Foundation Music Scholarship

Established by The G.A. Jr. and Kathryn M. Buder Charitable Foundation

Future Endowed Scholarships

College of Humanities and Social Sciences

Joan M. McDonald Endowed English Scholarship Fund

Established by Joan M. McDonald '05

Scholarship Requisites

| | |
|--------------------|--|
| Academic | 3.0 GPA, English, Freshman or transfer |
| Demographic | -- |
| Other | Lit, Society & Politics |

Shirley Bradley Price LeFlore Endowed Scholarship

Established by Lyah B. LeFlore-Ituen and the Shirley Bradley LeFlore Foundation

Scholarship Requisites

| | |
|--------------------|---|
| Academic | 3.0 GPA minimum, Creative Writing, English Literature or African American Studies |
| Demographic | Demonstrated interest in creating and promoting equal opportunities for all females, Demonstrated interest in African-American heritage |
| Other | -- |

School of Education

Bertha Winingham Lue-Hing and Cecil Lue-Hing Diversity Endowed Scholarship

Established by Bertha Winingham Lue-Hing, MAT '68 and Cecil Lue-Hing

Scholarship Requisites

| | |
|-----------------|----|
| Academic | -- |
|-----------------|----|

| | |
|--------------------|--|
| Demographic | Demonstrated interest in African-American heritage |
| Other | -- |

The donor would like to establish an endowment to honor his wife, Dr. Bertha Winingham Lue-Hing who is a 1950 graduate of Stowe Teacher's College, a 1968 graduate of Webster University, and the fourth African-American female to earn a Ph.D. degree in Education from Washington University in St. Louis in 1982. At her Wash. U. graduation, Bertha was the only Black person on the podium in her class. While this was 40 years ago, we hope that today this endowment will, even in some small way, help to improve diversity. Dr. Bertha Winingham Lue-Hing went on to retire as the Superintendent of School District #88, Bellwood, Illinois. As an African-American woman, Bertha was a trailblazer, overcoming multiple obstacles placed before her. This scholarship is to stand as her lasting legacy to the education she worked so hard to receive, as a beacon of inspiration to her children and grandchildren, several of whom have become professional educators, MBAs, CPAs, and attorneys, and as a source of support for deserving students at Webster University.

George Herbert Walker School of Business & Technology

Francis and Pauline Lonsway Endowed Scholarship Fund at Webster University

*Established by Francis A. and Pauline J. Lonsway**

Scholarship Requisites

| | |
|--------------------|--|
| Academic | 3.0 GPA, Management/Leadership, Graduate, Attending online/virtual courses |
| Demographic | U.S. Citizens or permanent residents |
| Other | Demonstrated financial need |

The Francis and Pauline Lonsway Endowed Scholarship Fund at Webster University is established to promote individualized learning that provides opportunities for students to pursue their

* Deceased

degree based on their unique needs. We began our relationship and support of the mission of the campus in the fall of 2005. The two of us have been engaged in the graduate program through Francis' teaching, his efforts to introduce new ideas for courses and programs, and our involvement in developing and supporting alumni events.

Julie Ann Walsh Reese '68 and Thomas Martin Reese Endowed Scholarship

Established by Julie Ann Walsh Reese '68

Scholarship Requisites

| | |
|--------------------|-------------------------|
| Academic | Math, Full-Time Student |
| Demographic | -- |
| Other | -- |

Leigh Gerdine College of Fine Arts

Anthony P. Venturella Endowed Scholarship in the Sargent Conservatory of Theatre Arts

Established by Anthony P. Venturella

Scholarship Requisites

| | |
|--------------------|--|
| Academic | 3.0 GPA, Musical Theatre, Conservatory of Theatre Arts |
| Demographic | -- |
| Other | Demonstrated financial need |

David P. Weiss Endowed Sargent Conservatory of Theatre Arts Scholarship

Established by David P. Weiss '75

Scholarship Requisites

| | |
|--------------------|--|
| Academic | 3.0 GPA, Undergraduate, Conservatory of Theatre Arts |
| Demographic | -- |
| Other | -- |

Joey Marshall Endowed Scholarship in Jazz Studies

Established by Christine C. Marshall

Scholarship Requisites

| | |
|--------------------|-----------------------|
| Academic | 3.0 GPA, Jazz Studies |
| Demographic | -- |
| Other | |

Mitchelle L. Price Endowed Scholarship

Established by Michelle L. Price MBA '93

Scholarship Requisites

| | |
|--------------------|------------------------------|
| Academic | Good Standing, Undergraduate |
| Demographic | -- |
| Other | Financial Need |

Rahman Family Endowed Scholarship

Established by Loren '12, MA '12 and Wakeel Rahman '12

Scholarship Requisites

| | |
|--------------------|---|
| Academic | 3.5 GPA, Undergraduate, Webster Groves, MO Main Campus, Full-time |
| Demographic | -- |
| Other | Demonstrate practical leadership experience outside of classroom with emphasis on Campus Life |

In the grand scheme, our time at Webster University will be considered brief. However, the impact it has had on us can only be considered eternal. We not only first met each other at Webster, but gained countless lifelong friends and mentors along the way. Our time in the classrooms of the School of Business created a foundation for our growing careers, but it was our time outside the classroom that embedded the leadership and organizational skills that have proven invaluable. We believe Webster University has always been a place where anybody can be somebody. We hope this scholarship can be a small piece of that going forward. - Loren and Wakeel Rahman, 2020

School of Communications

Claudia Burris Endowed Media Communications Scholarship

Established by Claudia R. Burris MAT '99

Scholarship Requisites

| | |
|--------------------|--|
| Academic | Media Communications, Webster Groves, MO (Main), Undergraduate, Photography pref |
| Demographic | -- |
| Other | Essay Required |

University-wide scholarships

Bruce & Charla Abernathy Endowed Scholarship Fund

Established by Charla Abernathy '86 and Bruce Abernathy, MA '79

Scholarship Requisites

| | |
|--------------------|--------------------------------|
| Academic | 3.5, Webster Groves, MO (Main) |
| Demographic | -- |
| Other | -- |

Edward D. and Nancy Schapiro Endowed Scholarship Fund

*Established by Edward D. * and Nancy Schapiro*

Scholarship Requisites

| | |
|--------------------|---------|
| Academic | 3.0 GPA |
| Demographic | -- |
| Other | -- |

Edward J. Powers Memorial Endowed Scholarship Fund

Established by Marie P. Covell '27

Scholarship Requisites

| | |
|--------------------|------------------------|
| Academic | 3.0 GPA, Undergraduate |
| Demographic | -- |
| Other | -- |

Florence Broeker Speas Memorial Endowed Scholarship

Established by Barbara Speas Havira '66 and Robert Donald Havira

Scholarship Requisites

| | |
|--------------------|----|
| Academic | -- |
| Demographic | -- |
| Other | -- |

* Deceased

Institutional Scholarships

For more information about institutional scholarships:
<https://www.webster.edu/financialaid/programs.php>

Freshman Scholarships

Academic Scholarships

Accepted applicants for admission are automatically reviewed for Webster Academic Scholarship consideration and are notified within 10-14 days after receiving their admission decision.

Alumni Legacy Scholarship

Webster University is pleased to announce a \$1,000 award per academic year being offered to the dependent sons and/or daughters of Webster University Alumni worldwide. This award applies to new, first-time freshmen or transfers who will be enrolled as full-time, degree-seeking students at the home campus in St. Louis, Missouri.

The Legacy Scholarship is automatically renewable for a maximum of four years and can be stacked with all other Webster-funded awards, with the exception of the full-tuition Presidential award and the full-tuition Phi Theta Kappa Distinguished Achievement award. Although a separate application is not required, applicants must provide the name of the qualifying parent in the space provided on the Application for Admission or on the Webster Common Application Supplement.

A+ Scholarship

Awarded to first-time freshmen who have completed the requirements for the A+ Scholarship Program at the time of graduation from an A+ designated high school in the State of Missouri. This is a Webster University award. The A+ Scholarship offered by the State of Missouri can only be used at Missouri public community colleges.

Leadership Scholarship

Webster University offers this for those students who have demonstrated significant leadership activity during high school and plan to continue this activity while at Webster. In addition to significant leadership experience, students most likely to be

awarded will have a cumulative GPA of 3.3 and either an ACT Composite Score of 24 or an SAT combined Critical Reading and Math Score of 1160-1190. The amount is \$2,000 per academic year and is renewable up to a total of eight consecutive semesters. Up to 12 individuals will be awarded.

Chancellor's Scholarship

Competitive and available to incoming freshmen who have met the following criteria: a 3.75 cumulative GPA (on a 4.0 scale), a minimum 27 ACT composite or 1260 SAT or higher. Finalists must be able to attend the scheduled competition event held at Webster Groves campus.

- Value: Full tuition — Renewable per academic year (up to eight consecutive semesters or until completion of 120 credit hours)
- Full-time enrollment required (13 credit hours or more) (Fall and Spring semesters only)
- Maintain a 3.5 GPA (on a 4.0 scale)

Proud to Serve

The Proud to Serve Scholarship is open to incoming freshmen and undergraduate transfer students who are dependents of active-duty military or honorably discharged veterans. Recipients of this award must maintain full-time status at the Webster Groves campus.

- Value: \$1,000 per academic year (renewable)

Webster University Loretto Community

The Webster University Loretto Community Scholarship has been established to recognize the history, mission, and service heritage of the Sisters of Loretto, and to honor their rich tradition of making higher education available to young women.

This will be available to graduating seniors who plan to attend Webster from any of the three Loretto-sponsored high schools: Nerinx Hall High School, St. Louis, Missouri; Loretto Academy, El Paso, Texas; and St. Mary's Academy, Denver, Colorado. A total of three per year will be offered, and multiple students from a single school can be awarded.

- Value: \$5,000 per academic year (renewable for up to four years) and is non-stackable
- 3.0 cumulative GPA or higher and ACT of 21 or higher, or SAT combined Reading and Math of 1060

Webster University 63119 Community Scholarship

The Webster University 63119 Community Scholarship has been established to recognize the history of community support and celebrate the partnership with Webster University from those who live in the 63119 zip code community. This scholarship will be available to graduating seniors who plan to attend Webster from the 63119 zip code area. A total of six per year will be offered.

- Value: \$2,500 per academic year (renewable for up to four years)
- 3.0 cumulative GPA or higher

Dr. Donald M. Suggs Scholarship

The Dr. Donald M. Suggs Scholarship has been established to honor Dr. Donald M. Suggs, an oral surgeon, newspaper publisher, patron of the arts and distinguished community leader. This competitive scholarship, available for incoming freshman, is designed to enhance the recruitment and retention of academically talented undergraduate students from ethnic groups typically under-represented in higher education.

This cannot be combined with other University awards. However, students may also be eligible to receive the Bright Flight Scholarship or other federal/state need-based aid. This award is subject to change if all federal, state, institutional and private funding received by the student exceeds the estimated cost of attendance as defined by Webster University's Financial Aid Office. Finalists must be able to attend the scheduled competition event held at the Webster Groves campus.

- Value: Full Tuition — Renewable per academic year (up to eight consecutive semesters or until completion of 120 credit hours)
- Full-time enrollment required (13 credit hours or more) (Fall and Spring semesters only)
- Must represent an ethnic group that is under-represented in higher education from the St. Louis metro area
- Qualifications (must meet the following):
 - 3.5 cumulative GPA (on a 4.0 scale)
 - A composite ACT score of 24 or higher or an SAT score of 1160 or higher
- Renewal Criteria
 - Maintain a cumulative grade point average of at least 3.0

- Enroll in a minimum of 13 credit hours each semester (Fall and Spring)
- Complete a minimum of 26 credit hours each academic year

Saint Louis Community Scholarship

Webster University's Saint Louis Community Scholarship is an effort to broaden our commitment to diversity, equity and inclusion in academic excellence in the St. Louis region. First-time, underserved college students residing either in North St. Louis County or the City of St. Louis will receive consideration for Saint Louis Community Scholarship upon application to admission at Webster University.

Eligibility:

- Graduating high school seniors, from an underserved community residing either in North St. Louis County or in the City of St. Louis
- First-time college student admitted to Webster with a 3.0 cumulative GPA or higher
- Full-time enrollment required (13 credit hours or more) during the (Fall and Spring semesters only)
- Demonstrated financial need determined by the Free Application for Federal Student Aid (FAFSA)

Scholarship Value:

- \$2,500 per academic year (up to eight consecutive semesters or until completion of 120 credit hours). The combination with other institutional aid cannot exceed tuition
- Renewal criteria: maintaining a cumulative 3.0 GPA and annual FAFSA completion

Transfer Scholarships

Webster Academic Scholarship

Renewable scholarship awarded to transfer applicants with a minimum 2.5 cumulative GPA. The award level is based on the applicant's cumulative GPA on all graded college-level work completed (as calculated by Webster) and/or high school academic record.

Recipients must be enrolled full-time (13-18 credit hours per semester) and attending the Webster Groves home campus. The Webster Academic Scholarship can be stacked with other Webster

scholarships, with the exception of the Presidential Transfer Scholarship and the full-tuition Phi Theta Kappa Distinguished Achievement Scholarship.

- Value: \$10,000 - \$16,000

Presidential Transfer Scholarship

Competitive renewable scholarship awarded to transfer applicants with a minimum cumulative GPA of 3.5 (as calculated by Webster). Preference is given to students earning an associate degree. Application form, essay, and recommendation from a previous college advisor or professor required.

The recipient must enroll directly at Webster University within one semester of community college graduation without intermediary enrollment at any other baccalaureate-granting institution. Recipients must be enrolled full-time (13-18 credit hours per semester) and attending the Webster Groves home campus. The Presidential Transfer Scholarship cannot be stacked with any other Webster scholarship and replaces any previous scholarship award offered to the student by Webster University.

- Value: Full Tuition per academic year
- Five awarded annually

Phi Theta Kappa Distinguished Achievement Scholarship

Competitive renewable scholarship awarded to transfer applicants with a minimum cumulative GPA of 3.5 (as calculated by Webster). Applicants must be a member of Phi Theta Kappa. An associate degree must be completed prior to enrollment at Webster University or the applicant must be a candidate for earning associate degree through reverse transfer. Application form, essay, and recommendation from chapter or regional Phi Theta Kappa required.

The recipient must enroll directly at Webster University within one semester of community college graduation without intermediary enrollment at any other baccalaureate-granting institution. Recipients must be enrolled full-time (13-18 credit hours per semester) and attending the Webster Groves home campus. The PTK Distinguished Achievement Scholarship cannot be stacked with any other Webster scholarship and replaces any

previous scholarship award offered to the student by Webster University.

- Value: Full Tuition per academic year
- Two awarded annually

Phi Theta Kappa

Renewable scholarship awarded to transfer applicants with a minimum 2.5 cumulative GPA. Applicants must request consideration by submitting proof of membership in Phi Theta Kappa and should have completed a minimum of 30 credit hours at time of application to Webster University.

Recipients must be enrolled full-time (13-18 credit hours per semester) and attending the Webster Groves home campus. The Webster Phi Theta Kappa Scholarship can be stacked with other Webster scholarships, with the exception of the full-tuition Presidential Transfer Scholarship and the full-tuition Phi Theta Kappa Distinguished Achievement Scholarship.

- Value: \$1,000 per academic year

Leadership Scholarship

Competitive renewable scholarship awarded to transfer students with a minimum 3.0 cumulative GPA. Applicants must document extracurricular activities and leadership involvement. Recipients must be enrolled full-time (13-18 credit hours per semester) and attending the Webster Groves home campus.

The Webster Transfer Leadership Scholarship can be stacked with other Webster scholarships, with the exception of the full-tuition Presidential Transfer Scholarship and the full-tuition Phi Theta Kappa Distinguished Achievement Scholarship.

- Value: \$2,000 per academic year
- 10 awarded annually

Alumni Legacy Scholarship

Webster University is pleased to announce a \$1,000 award per academic year being offered to the dependent children of Webster University Alumni worldwide. This award applies to new, first-time freshmen or transfers who will be enrolled as full-time, degree-seeking students at the home campus in St. Louis, Missouri.

The Legacy Scholarship is automatically renewable for a maximum of four years and can be stacked

with all other Webster-funded awards with the exception of the full-tuition Presidential Scholarship and the full-tuition Phi Theta Kappa Distinguished Achievement Scholarship. Although a separate application is not required, applicants must provide the name of the qualifying parent in the space provided on the Application for Admission or on the Webster Common Application Supplement.

Proud to Serve

The Proud to Serve Scholarship is open to incoming freshmen and undergraduate transfer students who are dependents of active-duty military or honorably discharged veterans. Recipients of this award must maintain full-time status at the Webster Groves campus.

- Value: \$1,000 — per academic year (Renewable)

WATTS Scholarship - Winning Approaches for Talented Transfers in STEM

Webster University invites qualified applicants to apply for a WATTS Scholarship (Winning Approaches for Talented Transfers in STEM). The WATTS program was made available through a grant from the National Science Foundation's Scholarships for Science, Technology, Engineering, and Math (S-STEM) program.

- Value: Up to \$10,000 per academic year
- Eight available for 2022-2023
- Application Deadline: April 15, 2022
- Minimum of 3.0 cumulative GPA
- Accepted as full-time, undergraduate transfer in biology, biological sciences, or chemistry program

A+ Scholarship

Renewable scholarship awarded to community college transfers who:

- graduated from a Missouri A+ high school and were certified to receive the A+ Scholarship from the state of Missouri, and
- either have completed or are completing an associate degree from a public Missouri community college.

The award level is based on the applicant's cumulative grade point average at the post-secondary level. A minimum 2.5 cumulative GPA at the college level is required. Submission of a high school transcript is required for consideration of this award. Recipients must enroll directly from the

community college into Webster University without intermediary enrollment at any other baccalaureate-granting institution.

- Value: \$1,000 per academic year

International Student Scholarships

International Freshman Students

International Freshman Students Accepted international applicants for admission are automatically reviewed for Webster Academic Scholarship based on their high school scores/grade point average. Students are notified within 2-3 weeks after receiving their admission decision.

- Value: \$13,000 - \$19,000 per year. Renewable for entire duration

International Transfer Students

Accepted international transfer applicants are automatically reviewed for Webster Transfer Scholarships based on their post-secondary academic performance/grade point average. The award level is based on the applicant's cumulative GPA on all graded college-level work completed (as calculated by Webster) and/or high school academic record. The Webster Academic Scholarship can be stacked with other Webster scholarships, with the exception of the Presidential Transfer Scholarship and the full-tuition Phi Theta Kappa Distinguished Achievement Scholarship.

- Value: \$10,000 - \$16,000 per year. Renewable until course completion.

Questions?

For student questions about endowed and/or annual scholarships:

Found a scholarship you'd like to learn more about?
Unsure if you fit the requirements to apply and qualify?
Contact Webster's Office of Advancement
Direct 314-246-8723 or giving@webster.edu

For student questions about institutional scholarships:

Webster U. Office of Financial Aid
314-968-6992 or 1-800-983-4623
financialaid@webster.edu

Select scholarships require completing and submitting the FAFSA and/or a scholarship application.
To learn more visit
<https://www.webster.edu/financialaid/programs.php>

For donor questions about endowed and/or annual scholarships:

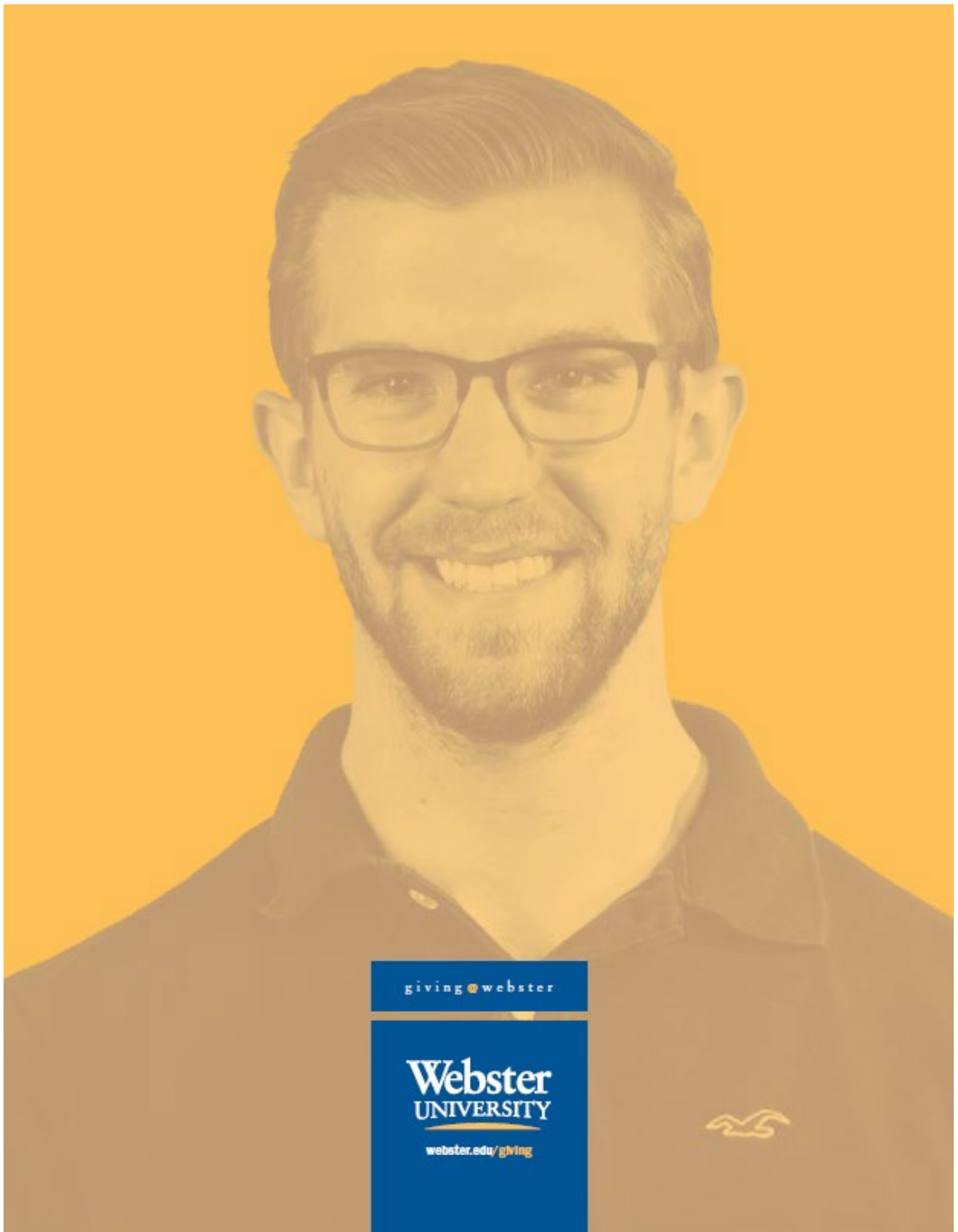
Found a scholarship that you want to support or want to establish one that fits your giving goals?
Webster U. Office of Advancement
Ryan Elliott, Associate Vice President
Direct: 314-246-5963 or relliott@webster.edu
<https://engage.webster.edu/giving/scholarships>
webster.edu/giving

For scholarship supporters that need to update their scholarship information in this guide.

Megan Duncan, Manager of Donor Relations and Engagement
Direct: 314-246-7457 or giving@webster.edu

Have you considered a future scholarship through your will or other estate plans?

Ryan Elliott, Associate Vice President
Direct: 314-246-5963 or relliott@webster.edu
<https://webster.edu/giving/index.php#ways-to-give>



* Deceased