



# 2024-2025 String Ensemble Auditions

---

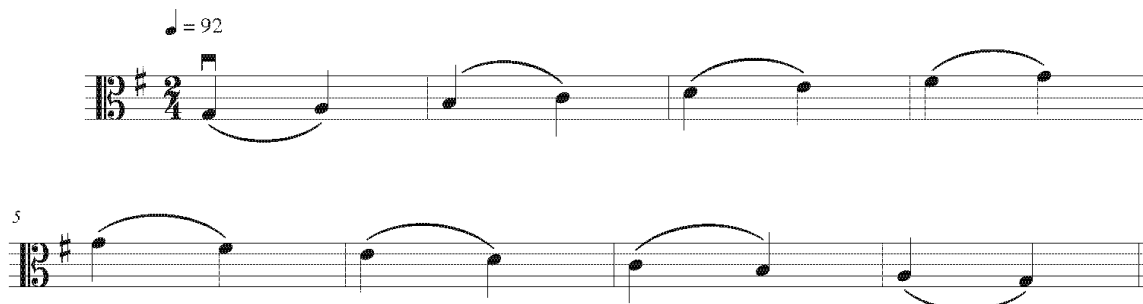
A 1 octave scale, 2 quarter notes slurred, without music.

- Violin: G Major
- Viola: G Major
- Cello: D Major

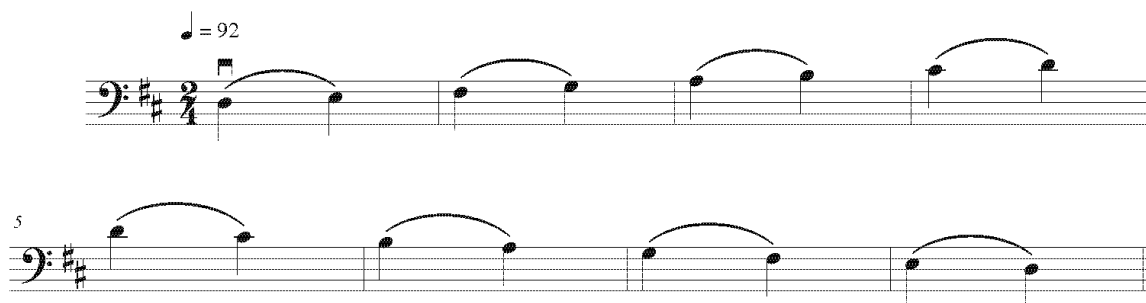
## Violin



## Viola



## Cello



- A prepared solo piece (not an orchestra part)
- \*If you are auditioning for String Ensemble and String Orchestra, prepare both excerpts. Pay close attention to the metronome markings for each excerpt.


\*If you prepared only the String Ensemble excerpt you will only be considered for String Ensemble not for String Orchestra.



# 2024-2025 String Ensemble Auditions

## Violin Excerpt

Sourwood Mountain arr. Carie Lane Gruselle | J.W. Pepper Sheet Music ([jwpepper.com](http://jwpepper.com))

 = 112

Handwritten musical score for violin excerpt, measures 13-30. The score is written on three staves in treble clef with a key signature of one sharp (F#). The tempo is marked as quarter note = 112. The score includes dynamic markings: *mf* (measures 21-22), *f* (measures 25-26), and *p* (measures 29-30). The piece concludes with a *pizz.* (pizzicato) marking and a final *arco* marking. Handwritten annotations include "START" at measure 13, "END" at measure 29, and a bracketed section from measure 29 to 30. Measure numbers 13, 14, 15, 16, 17, 18, 19, 20, 21, 22, 25, 26, 28, 29, and 30 are clearly marked.