



2024-2025 String Ensemble Auditions

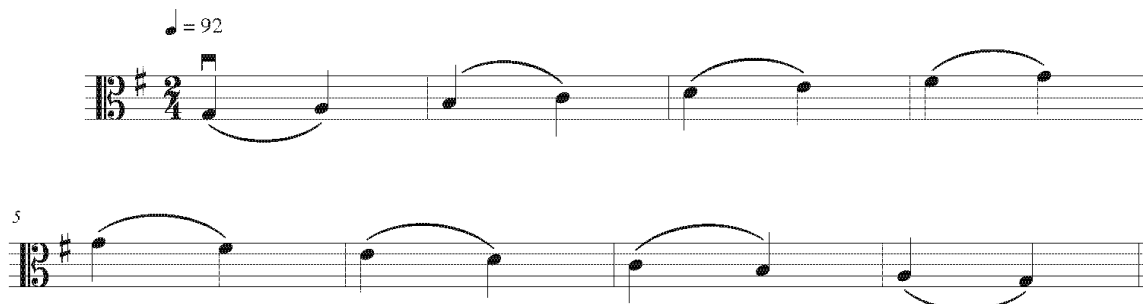
A 1 octave scale, 2 quarter notes slurred, without music.

- Violin: G Major
- Viola: G Major
- Cello: D Major

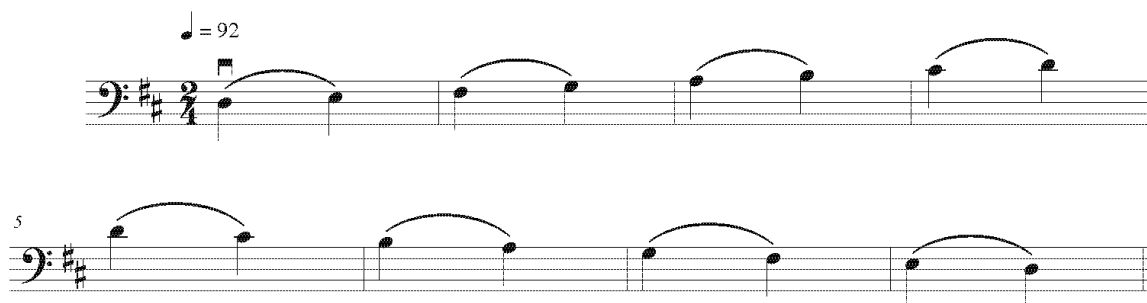
Violin



Viola



Cello



- A prepared solo piece (not an orchestra part)
- *If you are auditioning for String Ensemble and String Orchestra, prepare both excerpts. Pay close attention to the metronome markings for each excerpt.

*If you prepared only the String Ensemble excerpt you will only be considered for String Ensemble not for String Orchestra.



2024-2025 String Ensemble Auditions

Cello Excerpt

Metronome speed: ♩ = 112

Sourwood Mountain arr. Carie Lane Gruselle | J.W. Pepper Sheet Music (jwpepper.com)

Handwritten musical score for Cello Excerpt, showing measures 36 through 53. The score is written in bass clef with a key signature of two sharps (F# and C#). The tempo is marked as 112 beats per minute. The score includes dynamic markings such as *f* (forte) and *mf* (mezzo-forte). Handwritten annotations include a bracket labeled "START" under measure 37 and another bracket labeled "END" under measure 49. The score is divided into three systems of five measures each. Measure numbers 36, 37, 38, 39, 40, 41, 42, 43, 44, 45, 46, 47, 48, 49, 50, 51, 52, and 53 are clearly visible. The music features a mix of eighth and sixteenth notes, with some measures containing rests. The final measure (53) is marked with a forte (*f*) dynamic.